

NEW TRAFFIC PATTERN ON FRANKLIN BOULEVARD

Beginning Monday, January 9th

ATTENTION LOCAL BUSINESSES, RESIDENTS AND COMMUTERS!

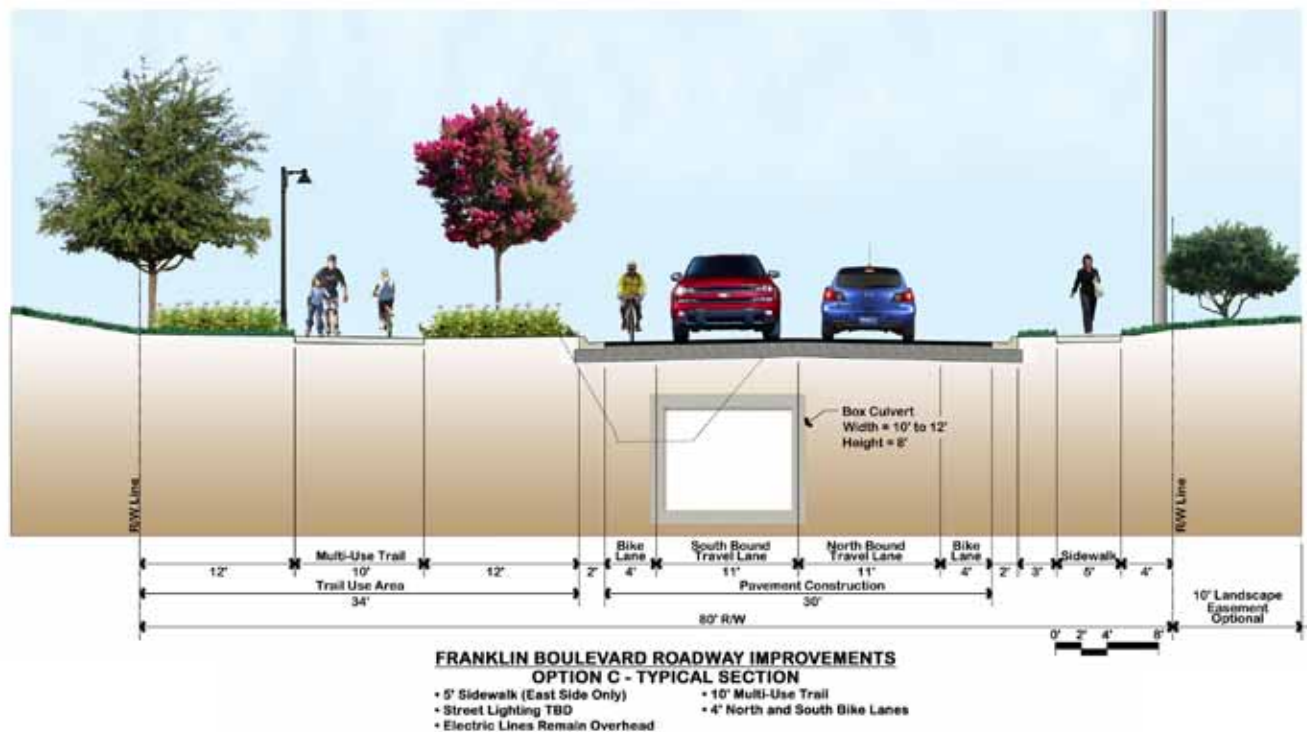
Blueprint 2000 announces that northbound traffic lanes on Franklin Boulevard are being temporarily converted to a two-way roadway from East Tennessee Street to Jefferson Street for approximately four (4) months. Southbound Franklin Boulevard will be closed to accommodate the relocation and replacement of overhead utilities, sanitary sewer and gas lines. This work is part of the Franklin Boulevard Flood Relief Project. The closure of southbound lanes and the northbound lane's conversion to two-way traffic is anticipated to begin on Monday, January 9, 2012, and continue through mid-April 2012. After this time there will be closures of the entire roadway until the anticipated completion date of August 2012. The east/west streets crossing Franklin Boulevard will be opened at all times, except for temporary closures to allow construction at the crossings.

Motorists travelling east on Tennessee Street will not be able to turn right onto Franklin Boulevard during this construction period. Detour routes will be clearly posted, as well as "Local

Traffic Only" signs for access. Motorists are advised to use caution in these areas.

Construction along Franklin Boulevard will involve enclosing the open ditch and installing a box culvert. Other activities include: reducing the street from the four existing lanes to two 11-foot lanes; adding 4-foot bike lanes, a 6-foot sidewalk, a 10-foot multi-use trail; and installing left turn lanes at Park Avenue, a southbound left turn lane at Jefferson Street, and a northbound left turn lane at College Avenue.

The project is being funded by Blueprint 2000 and by a Community Development Block Grant (CDBG) from the U.S. Department of Housing and Urban Development. The estimated cost to construct the improvements is \$7.8 million, which includes \$4.2 million from CDBG. The CDBG grant is being managed by the Florida Department of Economic Opportunity.

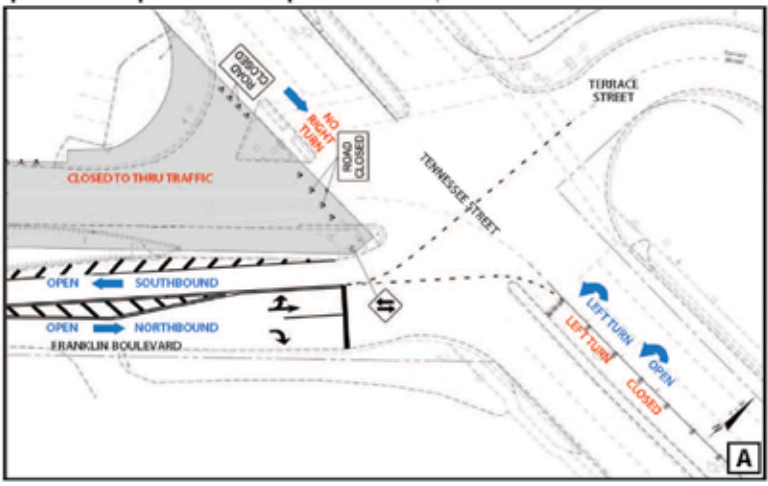


2727 Apalachee Parkway
Suite 200
Tallahassee, FL 32301

FOR ADDITIONAL INFORMATION CONTACT THE PUBLIC INFORMATION OFFICE:

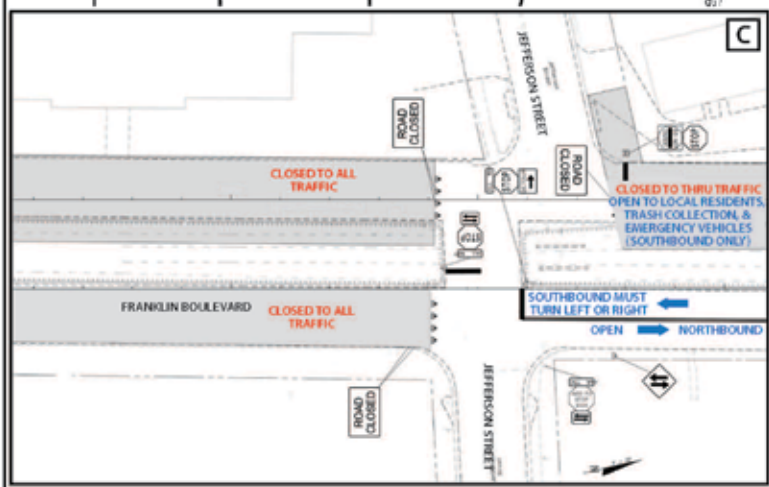
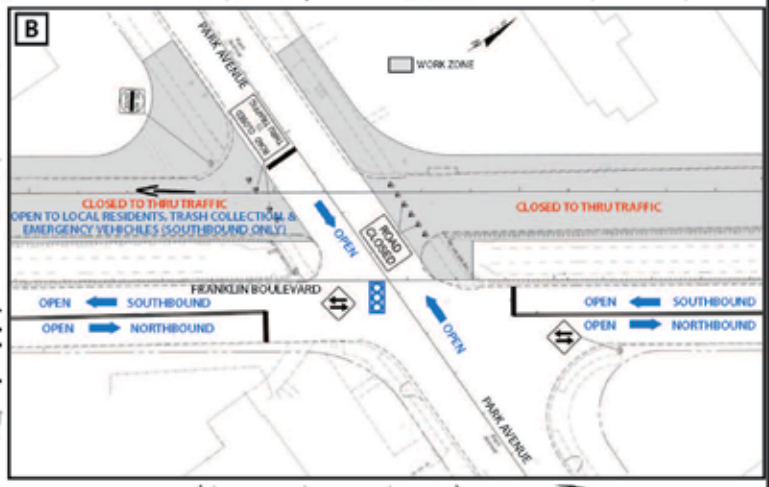
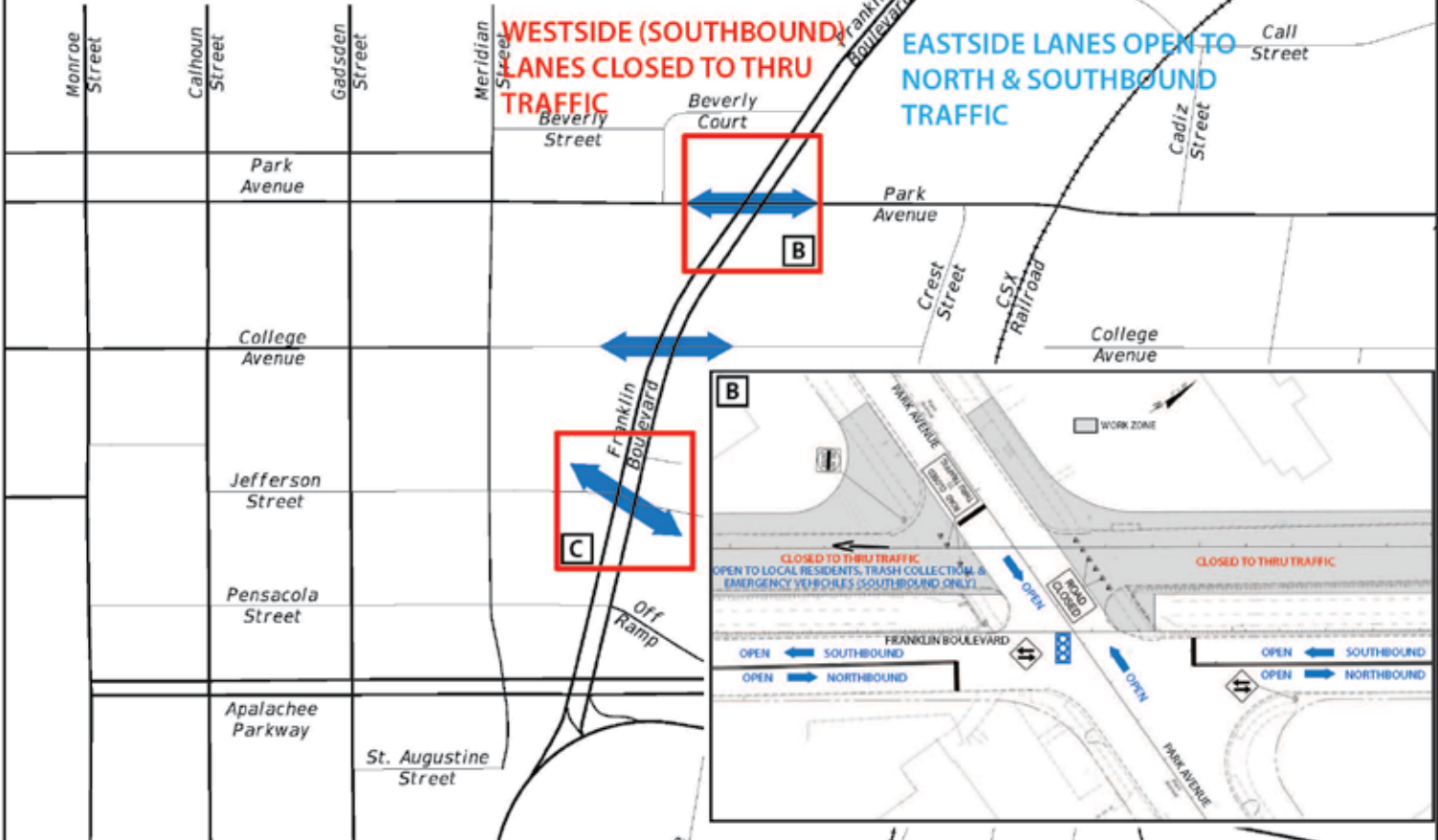
Margie Quillman, Public Involvement Manager or
Carlana Hoffman, Public Information Officer
Phone: 850-219-1060
www.blueprint2000.org


FRANKLIN BOULEVARD NEW TRAFFIC PATTERN BEGINNING JANUARY 9, 2012



WESTSIDE (SOUTHBOUND) LANES CLOSED TO THRU TRAFFIC

EASTSIDE LANES OPEN TO NORTH & SOUTHBOUND TRAFFIC



LEGEND
 Cross Streets to Remain Open

