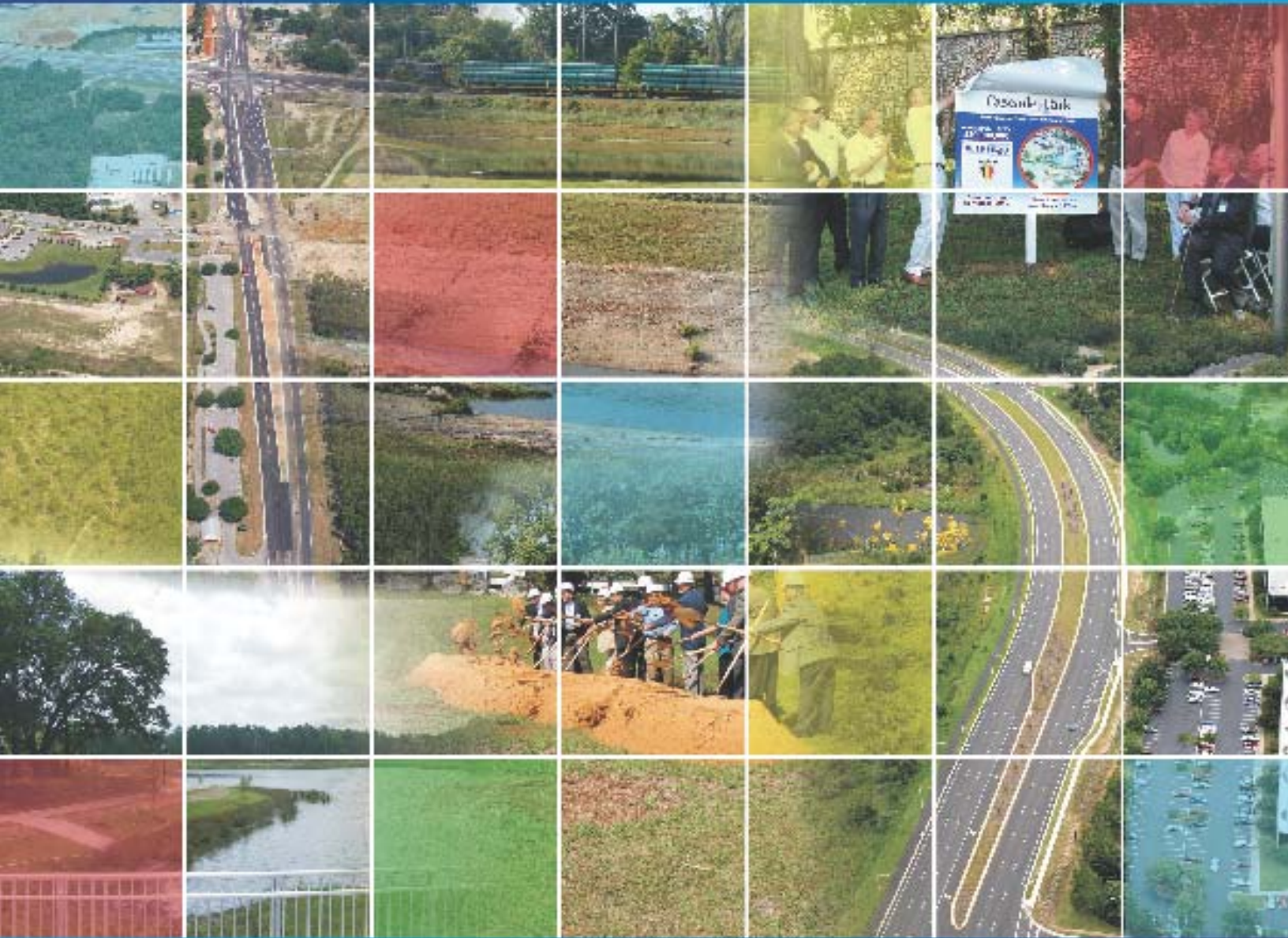


Monthly Progress Report

June 2011

Reporting Period May 10, 2011 through June 13, 2011



CITY OF TALLAHASSEE - LEON COUNTY
BLUEPRINT
INTERGOVERNMENTAL AGENCY **2000**

BLUEPRINT 2000
2727 Apalachee Parkway
Suite 200
Tallahassee, Florida 32301
(850)219-1060



TABLE OF CONTENTS

	<u>Page</u>
GEC – General Engineering Consultant	1
GEC – Public Involvement	5
N1 - Capital Circle NW – I-10 to US 90	6
N2 - Capital Circle NW/SW – SR 371 (Orange Avenue) to US 90	7
W1 - Capital Circle SW – Crawfordville Road to SR 20	12
E3 - Capital Circle SE – Crawfordville Road to Woodville Highway	17
E2 - Capital Circle SE – Woodville Highway to Tram Road	21
E1 - Capital Circle SE – Connie Drive to Tram Road.....	26
C2 - Capital Cascadess Trail – Segment 2	27
C3 & C4 - Capital Cascadess Trail – Segments 3 and 4 Design	34
FB - Franklin Boulevard Flood Relief Project (FB)	38
Capital Cascadess Connector Bridge	42
Acronym Glossary	45

GEC – GENERAL ENGINEERING CONSULTANT

Project Description:

General Engineering Consultant Contract for the Blueprint 2000 Intergovernmental Agency. THE LPA GROUP INCORPORATED is the Prime Consultant with Jacobs Engineering Group, Incorporated as the major subconsultant. Twelve additional subconsultants, seven of which are M/WBE firms, make up the LPA/Jacobs Blueprint GEC Management Team.

Key Personnel:

Program Manager: David Snyder – THE LPA GROUP INCORPORATED
 Design Manager: Jim Shepherd - Jacobs

Contract Cost & Schedule Status – Contract 597

Original Contract Amount:	\$	25,401,568.00
Fiscal Year Re-Authorization:	\$	2,065,704.00
Executed Supplemental Agreements:	\$	-1,422,450.00
Pending Supplemental Agreements:	\$	0.00
Current Contract Amount:	\$	26,044,822.00
Invoiced to Date:	\$	23,270,145.02
Remaining Contract Amount:	\$	2,774,676.98
Percent of Contract Amount Complete:		89.3%

* Change in FY 2011 Authorizations are included in Contract Amendment No. 29, dated March 22, 2011 and are as follows:

LOA No. 5	(Right-of-Way)	\$ 1,500,000	reduction
LOA No. 2	(Right-of-Way)	\$ 39,456	reduction
LOA No. 7	(Right-of-Way)	\$ 182,994	reduction
LOA No. 11	(Right-of-Way)	\$ 300,000	addition
Total		\$ 1,422,450	reduction

GEC – GENERAL ENGINEERING CONSULTANT

Subconsultant Participation:	Contract Amt	% of GEC Contract	Expended To Date	FY To Date
Moore Bass Consulting <i>Stormwater & Landscaping</i>	\$ 510,902.00	1.96	\$ 238,003.62	\$ 2,600.00
Pope Environmental <i>Environmental Services</i>	\$ 424,276.00	1.63	\$ 238,836.92	\$ 25,620.00
OLH International <i>Program Controls</i>	\$ 1,442,165.00	5.54	\$ 1,544,130.76	\$ 0.00
Beck Consulting Group <i>Government Relations</i>	\$ 143,127.00	0.55	\$ 129,858.33	\$ 31,006.25
Quest Corporation of America <i>Public Involvement</i>	\$ 1,235,314.00	4.74	\$ 1,070,312.48	\$ 143,869.01
Uzzell Advertising <i>Public Relations, Web Maint.</i>	\$ 590,998.00	2.27	\$ 622,745.51	\$ 60,804.00
Welch & Ward Architects (no longer in business) <i>Architecture, Recreation Facilities</i>	\$ 25,000.00	0.10	\$ 16,520.00	\$ 0.00
O'Neal Survey & Mapping <i>Surveying and Mapping</i>	\$ 4,928.00	0.02	\$ 27,778.50	\$ 11,041.00
THC Right-of-Way Services, Inc. <i>R/W appraisal and acquisition</i>	\$ 5,013,478.00	19.25	\$ 4,579,685.17	\$ 217,770.71
GPI Southeast <i>Survey and mapping</i>	\$ 491,405.00	1.89	\$ 179,750.33	\$ 0.00
Williams Earth Sciences <i>Geotechnical Services</i>	\$ 65,000.00	0.25	\$ 30,783.12	\$ 0.00
Allen Nobles & Associates <i>Survey</i>	\$ 24,970.00	0.10	\$ 130,668.64	\$ 0.00
THE LPA GROUP (PRIME) <i>Prime Consultant</i>	\$ 9,462,412.00	36.32	\$ 9,184,375.45	\$ 1,185,397.53
JACOBS (PRIME SUB) <i>Prime Subconsultant</i>	\$ 6,605,845.00	25.36	\$ 5,266,484.43	\$ 500,299.84
Wilderness Graphics <i>Signage</i>	\$ 5,000.00	0.02	\$ 5,000.00	\$ 0.00
<hr/>				
Total Contract:	\$ 26,044,820.00	100.00%	\$ 23,264,936.46	\$ 2,178,408.341

MBE Goal:	\$ 4,036,947.10	15.50%
MBE to Date:	\$ 3,888,189.12	18.80%

GEC – GENERAL ENGINEERING CONSULTANT

Activities Since Last Period:

1. Successful shift of MOT at Cascades Park for Phase IIA construction to continue
2. Met with FDOT in Chipley to finalize additional dollars for CCNW/SW-N2 and CCSW-W1 projects
3. Resolved environmental mitigation issue with COT Growth Management on CCSE-E3
4. Held site visit at Cascades Park with City Commissioner and 25 other attendees
5. Attended FAMU Way Extension/CCT Segment 3 update at Walker Ford Community Center
6. Continued to work on Blueprint 2000 telephone and internet contract, also reviewing server and computer status
7. Set construction limits on CCNW/SW project in lieu of additional dollars from FDOT
8. Met with DCA regarding Blueprint 2000 projects eligible for additional \$1.65 million in DREF dollars
9. Coordinated with Leon County, COT and DCA regarding status of Franklin Boulevard design status
10. Resolved utility conflict issues at retaining walls along Gadsden Street within Cascades Park
11. Coordinating with COT Public Works on FAMU Way/CCT Segment 3 contiguous design ★
12. Met with COT Traffic Operations to adjust several traffic lights for Cascades Park MOT
13. Worked through several change orders with contractor at Cascades Park project

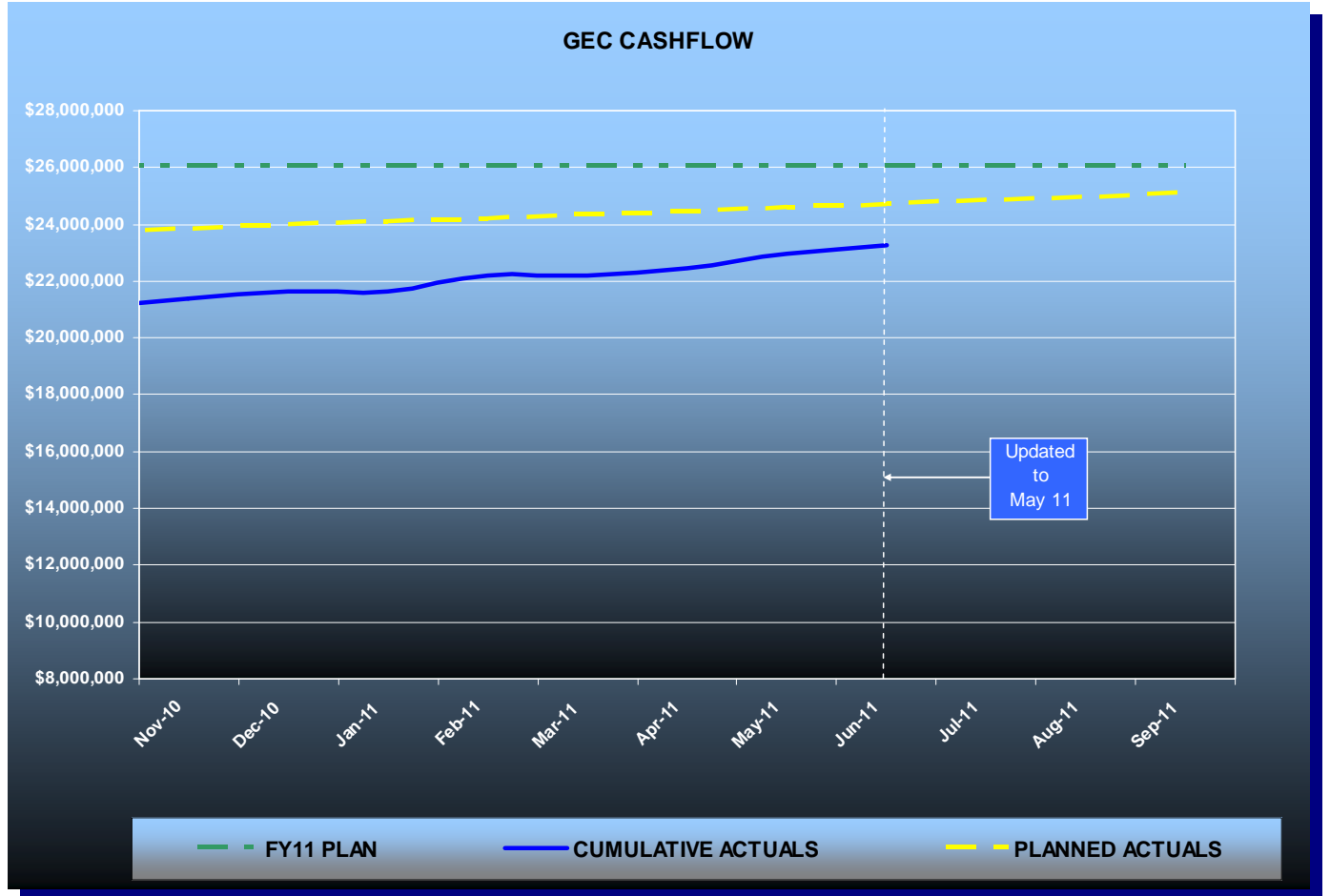
Planned Activities for Next Period:

1. Monitor MOT situation and traffic conditions at Cascades Park, make adjustments as needed
2. Resolved telephone/internet contract and server/computer issues at Blueprint 2000 offices
3. Present results of the Design Charette for the Capital Cascades Connector Bridge to CAC and IA
4. Secure EMP permit and issue Release for Construction plans for the CCSE-E3 project
5. Monitor progress on CCNW/SW plans, secure all permits and execute required project JPA's
6. Move the design for Franklin Boulevard Stormwater project to 90% complete stage
7. Resolve change orders and any outstanding issues regarding construction at Cascades Park
8. Monitor the on-going contamination clean up initiative at U-Save
9. Advertise the American Tower driveway construction to the local contractor's arena
10. Continue with the FAMU Way Extension/Cascades Trail Segment 3 project assisting the COT Public Works as needed ★

★Note: The FAMU Way Assignment to develop Construction and Right-of-Way cost estimates is not being funded with sales tax money

GEC – GENERAL ENGINEERING CONSULTANT

GEC Contract Financial Summary of Planned Vs. Actual Costs – FISCAL YEAR 2011



GEC – PUBLIC INVOLVEMENT

Activities Since Last Period:

1. Continued to develop marketing plan for Blueprint 2000 and Cascades Park
2. Drafted My View Article for Franklin Boulevard Flooding Project
3. Prepared presentations for TCC, CAC and Intergovernmental Agency Meetings
4. Prepared Right-of-Way and Construction Limits graphic for Capital Circle NW/SW-N2
5. Prepared Van Buren Location Pond Graphic for CCT-3
6. Attended Progress Meetings for Cascades Park and CCSE-E3
7. Attended FAMU Way Extension/CCT Segment 3 update at Walker Ford Community Center
8. Attended site tour at Cascades Park
9. Prepared CCSE-E3 ARRA Monthly Report for FDOT District III Public Involvement Office
10. Issued two press releases for Cascades Park
11. Handled 21 public responses

Planned Activities for Next Period:

1. Continue to develop marketing plan for Blueprint 2000 and Cascades Park
2. Review and update existing website
3. Continue to develop new website
4. Update Act Database for all projects with new Leon County GIS Information
5. Attend Progress Meetings for Cascades Park and CCSE-E3
6. Revise My View letter for Franklin Boulevard
7. Issue CCSE-E3 ARRA Monthly Report for FDOT District III Public Involvement Office
8. Issue and Deliver Detour Flyer to Jefferson Street Residents and Businesses

N1 - CAPITAL CIRCLE NW – I-10 TO US 90

Project Description - Roadway Contract:

This 1.991-mile roadway project (FPID: 219722-1-52-01 & 02) consists of upgrading the existing undivided rural facility to a six-lane divided urban (curb and gutter) facility. Upgrades to the West Tennessee, Tharpe, Hartsfield and Commonwealth intersections are included. The purpose of the roadway improvement project is to increase the capacity and safety of the existing highway. The roadway project was designed, let and constructed by the Florida Department of Transportation, with advance funding provided by the Blueprint 2000 Intergovernmental Agency.

The CCNW-N1 Roadway Improvement Project was final accepted by FDOT on September 4, 2007.

Project Personnel:

Blueprint 2000:	Program Manager:	David Snyder
	CEI Construction Manager:	Marcus Kelly
	CEI Administrator:	Joey Gordon

Project Description – Park Amenity and Landscaping Contract:

A roadway landscaping and pond upgrading contract was issued by Blueprint 2000 on the CCNW-N1 project. Capital Circle medians from south of Tennessee Street to south of I-10 were landscaped, as well as the medians of several intersecting roads. Regional Stormwater Pond #1, later dedicated as the Martha Wellman Park, also received landscaping, a walking trail and numerous park amenities.

The CCNW-N1 Roadway Improvements project, from West Tennessee St. to Commonwealth Boulevard (with FDOT), was final accepted on September 4th, 2007. The total construction cost, including \$1,259,912 of JPA utility-work with COT, was \$25,364,081.84

The CCNW-N1 Park Amenities and Landscaping Project (later named Martha Wellman Park) was Final Accepted by Blueprint 2000 on June 26, 2009. The total construction cost was \$1,055,653.37.

The total Right-of-Way costs for these projects was \$46,374,947.00.

N2 - CAPITAL CIRCLE NW/SW – SR 371 (ORANGE AVE.) TO US 90

Project Description:

The expanded Project Development and Environmental (PD&E) study limits for this 2.9 mile project extend from Tennessee Street (US 90/SR 10) to Orange Avenue (SR 371). The purpose of this roadway improvement project is to increase the capacity and safety of the existing highway by expanding the existing two-lane undivided rural roadway to a six-lane divided urban (curb and gutter) facility. New traffic signals will be provided at Orange Avenue, Blountstown Highway and Gum Road intersections. The project also includes significant landscaping as well as pedestrian, bicycle and recreational amenities. This project will develop final design plans for construction.

Project Personnel:

Blueprint 2000:	Program Manager:	David Snyder
	Construction Manager:	Marcus Kelly
	Project Manager:	Latesa Turner
H.W. Lochner:	Project Manager:	Hugh Williams

Contract Cost & Schedule Status - Agreement No. 772/Authorization 1 - As of 6/13/2011

Contract Commencement:	10May04
Contract Completion:	31Dec14
Percent of Work Performed:	99.0%
Original Contract Amount:	\$ 1,921,585.90
Executed Supplemental Agreements:	\$ 3,933,475.05
Pending Supplemental Agreements:	\$ 0.00
Current Contract Amount:	\$ 5,855,060.95
Invoiced to Date:	\$ 5,583,007.78
Remaining Contract Amount:	\$ 272,053.17
Percent of Contract Amount Complete:	95.4%
Original Contract Time:	1095 Days
Contract Time Extensions:	2792 Days
Current Contract Time:	3887 Days
Contract Time Expended:	2590 Days
Contract Time Remaining:	1297 Days
Percent Contract Time Expended:	66.6%

N2 - CAPITAL CIRCLE NW/SW – SR 371 (ORANGE AVE.) TO US 90

Schedule Milestones:

Final Environmental Documents	20Jun06
Final Preliminary Engineering Report	20Jun06
Location Design Concept Approval (LDCA)	22Aug06
30% Roadway Plans	28Aug06
VE Complete	27Oct06
2nd Draft ROW Maps	30Apr07
Final ROW Maps	30Sep07
60% Roadway Plans	01Nov07
90% Roadway Plans	08Aug08
60% Structures (CSX Railroad Bridge, Gum Creek Bridge and Retaining Walls) Plans	15Jan09
90% Structures (CSX Railroad Bridge, Gum Creek Bridge and Retaining Walls) Plans	13Feb09
100% Roadway and Structures Plans	16Jul09
Pre-Final Plans (US 90 to Orange)	18Dec09
100% Plans (US 90 to North of SR 20)	09Sep10
Final Plans	TBD

Design Subconsultant Participation:	Contract Amt	% of Design Contract	Expended To Date	FY To Date
Environmental Geotechnical Specialists				
<i>Geotechnical</i>	\$ 574,866.25	9.82	\$ 576,358.44	\$ 0.00
Diversified Design & Drafting Services, Inc.				
<i>Survey and R/W Mapping</i>	\$ 820,349.64	14.01	\$ 779,549.20	\$ 900.00
Archaeological Consultants, Inc.				
<i>Cultural Resource Assessment</i>	\$ 24,093.51	0.41	\$ 24,093.51	\$ 0.00
HNTB/TEI				
<i>Traffic Analysis</i>	\$ 90,310.59	1.54	\$ 90,310.59	\$ 0.00
American Acquisition Group				
<i>Right of Way</i>	\$ 97,873.48	1.67	\$ 94,046.22	\$ 0.00
HW LOCHNER (PRIME)				
<i>Prime Consultant</i>	\$ 4,030,913.05	68.84	\$ 3,807,900.24	\$ 27,022.91
PBS&J				
<i>Landscape</i>	\$ 159,219.43	2.72	\$ 157,529.58	\$ 0.00
CDM				
<i>Stormwater Modeling</i>	\$ 57,435.00	0.98	\$ 53,220.00	\$ 0.00
<hr/>				
Total Design Contract:	\$ 5,855,060.95	100.00%	\$ 5,583,007.78	\$ 27,922.91

Design MBE Goal:	\$ 907,534.45	15.50%
Design MBE to Date:	\$ 1,380,001.15	24.72%

N2 - CAPITAL CIRCLE NW/SW – SR 371 (ORANGE AVE.) TO US 90

Project Status:

Pre-Final plans for the full Capital Circle NW/SW (SR 263) project improvements (from Orange Avenue (SR 371) to Tennessee Street (US 90)) were submitted in December 2009. Right-of-Way acquisition, utility coordination and environmental permitting activities based on the full project are ongoing and nearing completion. Blueprint has authorized H.W. Lochner to modify the plans and permits to construct the portion of the project from north of Blountstown Highway (SR 20) to Tennessee Street (US 90) based on available construction funding. Construction (Bid) documents for this segment of the project are currently being finalized in preparation for advertisement in late 2011.

Activities Since Last Period:

1. Continued responding to review comments on the Phase IV (100%) plans for the shortened project. Continued preparation of the Final Construction Plans
2. Continued coordination with Leon County Growth Management (LCGEM) on the Environmental Management permit for the full project. LCGEM has requested that all outstanding issues with Leon County Public Works be addressed prior to issuance of the permit. Additionally, the Natural Features Inventory (NFI) must be updated to cover the Gum Road Mitigation area
3. Responded to all Leon County plans review comments as discussed at the March 30th comment resolution meeting. Submitted updated plans to Leon County reflecting all changes resulting from issue resolutions
4. Continued coordination with Blueprint following the Administrative Hearing on the FDEP's Notice of Intent (NOI) to issue the wetland resource permit for the project. The hearing was held on March 1st - 2nd, 2011. Currently awaiting issuance of Final Order from FDEP
5. Coordination with City of Tallahassee Electric regarding 5-acre property transfer for proposed substation development at Broadmoor Estates
6. Continued coordination with City of Tallahassee Underground Utility Department on JPA for water and sewer work
7. Continued coordination with FDOT to finalize Local Funding Agreement and Memorandum of Agreement for CSX Railroad CEI and Flagmen

Planned Activities for Next Period:

1. Schedule follow-up comment resolution meeting with Leon County Public Works staff to discuss outstanding project design issues
2. Coordinate with FDEP on Final Wetland Resource Permit Issuance
3. Coordinate with ACOE on dredge and fill permit approval following FDEP Wetland Resource Permit issuance
4. Obtain LCGEM EMP permit approval for full project
5. Continue coordination with COT Underground Utility Department on revisions to draft JPA and Utility Contract Plans for the water and sewer work
6. Continue coordination with Utility Agencies. Obtain all outstanding utility agency mark-ups and schedule final utility coordination meeting
7. Continue preparation of project construction advertisement
8. Execute Local Funding Agreement and Memorandum of Agreement with FDOT to encumber funds for CSX Railroad CEI and Flagmen
9. Finalize Local Agency Project (LAP) Agreement and coordinate with FDOT
10. Continue coordination with LCSB and FDOT on the Joint Project Agreement for the proposed bus facility

N2 - CAPITAL CIRCLE NW/SW – SR 371 (ORANGE AVE.) TO US 90

Significant Issues and Resolutions:

ISSUE

Complete outstanding permit and utility issues.

RESOLUTION

The FDEP Wetland Resource Permit Notice of Intent was issued on 4/30/10. An Administrative Hearing was held on March 1-2, 2011. The Administrative Law Judge filed a recommended order on April 11th, 2011. Issuance of the permit pending the Final Order by FDEP.

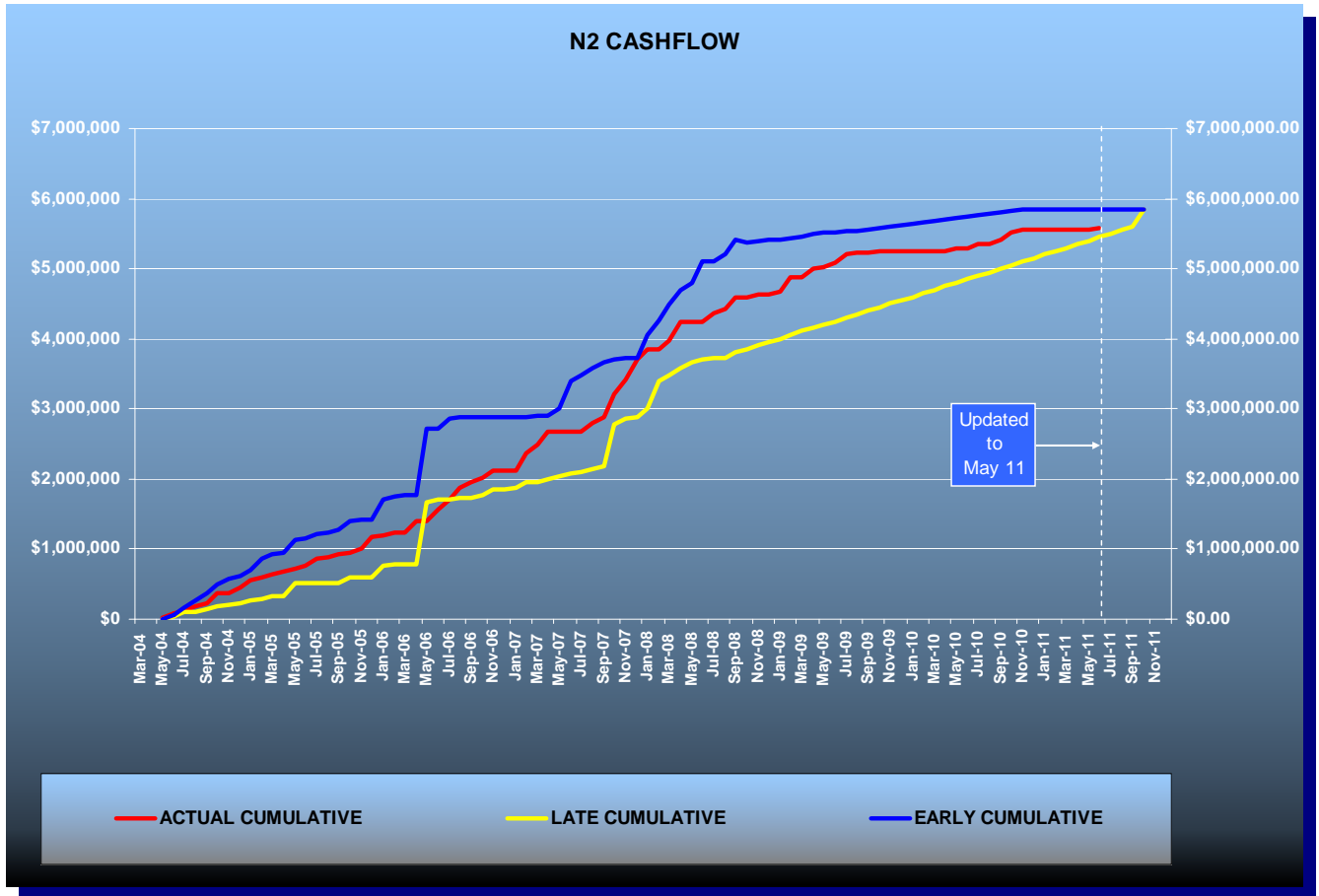
The Corps of Engineers issued a Notice of Intent to permit the project on 7/28/10. Updated mitigation plans were submitted to ACOE. Final permit is pending the issuance of the FDEP Wetland Resource Permit.

Leon County Growth and Environmental Management has completed the review of the EMP application for the project. EMP permit issuance pending resolution of Leon County Public Works comments and 2007 NFI update.

Several utility agency relocation plans and schedules remain outstanding. The draft JPA with the COT Water/Sewer department is currently being re-written by City staff.

N2 - CAPITAL CIRCLE NW/SW – SR 371 (ORANGE AVE.) TO US 90

Contract Financial Summary of Planned Vs. Actual Costs



Right-of-Way Status Report:

IN POSSESSION	88
AGREEMENTS SECURED BUT NOT CLOSED	0
NEGOTIATING/PREPARING FOR SUIT	0
TOTAL PARCELS ON PROJECT	88
DONATIONS	4

RIGHT-OF-WAY ACQUISITION, DEMOLITION AND RELOCATION ARE COMPLETE.

W1 - CAPITAL CIRCLE SW – CRAWFORDVILLE ROAD TO SR 20

Project Description:

A Project Development and Environmental (PD&E) study was conducted for this portion of Capital Circle (SR 263) between Crawfordville Road (SR 61/US 319) and Blountstown Highway (SR 20); a distance of approximately 6.7 miles. The PD&E study was conducted in accordance with Federal Highway Administration (FHWA), Blueprint 2000 Agency, and Florida Department of Transportation (FDOT) guidelines. The study evaluated alternative alignments as well as the existing alignment. Several viable alternatives were developed and evaluated in order to address the project needs while taking into account the Blueprint 2000 "Project Definitions Report", prepared by the Economic and Environmental Consensus Committee in 1999 and the Lake Bradford Sector Plan conducted by the Tallahassee/Leon County Planning Department.

Project Personnel:

Blueprint 2000:	Planning Manager:	Dave Bright
	Project Manager:	Latesa Turner
Kimley-Horn & Assoc.:	Project Manager:	Steve Godfrey

Contract Cost & Schedule Status - Agreement No. 1284/Authorization 1 - As of 6/13/2011

Contract Commencement:	22Aug06
Contract Completion:	30Apr12
Percent of Work Performed:	96.0%
Original Contract Amount:	\$ 2,672,271.68
Executed Supplemental Agreements:	\$ 56,177.05
Pending Supplemental Agreements:	\$ 0.00
Current Contract Amount:	\$ 2,728,448.73
Invoiced to Date:	\$ 2,598,608.58
Remaining Contract Amount:	\$ 129,840.15
Percent of Contract Amount Complete:	95.2%
Original Contract Time:	1096 Days
Contract Time Extensions:	982 Days
Current Contract Time:	2078 Days
Contract Time Expended:	1756 Days
Contract Time Remaining:	322 Days
Percent Contract Time Expended:	84.5%

Schedule Milestones:

Consultant Selected	26May06
Study Begins	22Aug06
Agency Kick-off Meeting	19Oct06
Public Kick-off Meeting	19Oct06
Community Mini-Charrettes	15Jan07
Community Meeting	12Apr07
Corridor/Concepts Charrette	10May07
Interim Public Meeting	06Nov07
Alternatives Public Information Meeting	13Nov08
Preferred Alternative Public Meeting	13Aug09
Public Hearing	TBD

W1 - CAPITAL CIRCLE SW – CRAWFORDVILLE ROAD TO SR 20

Design Subconsultant Participation:	Contract Amt	% of Design Contract	Expended To Date	FY To Date
Target Copy and Sign Printers <i>Printing</i>	\$ 30,000.00	1.10	\$ 29,818.54	\$ 0.00
Keystone Field Services <i>Relocation</i>	\$ 35,000.00	1.28	\$ 35,000.00	\$ 0.00
Environmental and Geotechnical Specialists <i>Geotech</i>	\$ 127,874.94	4.69	\$ 96,141.96	\$ 0.00
Diversified Design & Drafting Services <i>Survey</i>	\$ 31,840.00	1.17	\$ 31,840.00	\$ 0.00
StategyWise, LLC <i>Economic Development</i>	\$ 0.00	0.00	\$ 0.00	\$ 0.00
Hamilton Smith Assoc. <i>Traffic</i>	\$ 18,600.00	0.68	\$ 18,600.00	\$ 0.00
Registe, Sliger Engineering <i>Structures</i>	\$ 123,376.71	4.52	\$ 118,564.81	\$ 12,707.79
KIMLEY-HORN & ASSOC (PRIME) <i>Prime</i>	\$ 1,758,672.25	64.46	\$ 1,683,176.11	\$ 17,671.18
Dr. Wayson <i>Noise</i>	\$ 0.00	0.00	\$ 0.00	\$ 0.00
Hass Center <i>Economic Development</i>	\$ 37,200.00	1.36	\$ 37,200.00	\$ 0.00
Florida Acquisition & Appraisal <i>Appraisal/Acquisition</i>	\$ 200,804.91	7.36	\$ 200,804.93	\$ 0.00
Biological Research Assoc. <i>Water Quality</i>	\$ 105,815.50	3.88	\$ 105,815.50	\$ 0.00
Search, Inc <i>Cultural Resource/Archaeological</i>	\$ 71,444.42	2.62	\$ 53,826.73	\$ 0.00
Camp, Dresser & McKee <i>Drainage & Pond Design</i>	\$ 187,820.00	6.88	\$ 187,820.00	\$ 0.00
Total Design Contract:	\$ 2,728,448.73	100.00%	\$ 2,598,608.58	\$ 30,378.97

Design MBE Goal:	\$ 369,704.80	13.55%
Design MBE to Date:	\$ 329,965.31	12.70%

W1 - CAPITAL CIRCLE SW – CRAWFORDVILLE ROAD TO SR 20

Project Status:

Kimley-Horn and Associates began the Capital Circle Southwest PD&E study in late August 2006. The Public and Agency Kickoff Meetings were conducted in October 2006. Six Community Forum Meetings were conducted concluding with a Town Hall Meeting held in April 2007. The Concept Charrettes were held on May 10th and 12th, 2007. The Intergovernmental Agency (IA) approved the evaluation criteria and the criteria weighting that was used to evaluate the alternative alignments. An Interim Public Meeting was held on November 6, 2007 to present the status of the project since the Concepts Charrette. The project began the analysis phase using the alternative alignments established through the Concept Charrette process. An Alternatives Public Meeting was held on November 13, 2008 to present the results of the evaluations conducted for the alternative alignments within the four corridor segments. Based on the results of the analyses and input received from the public at the Alternatives Meeting, recommendations were made regarding the best alternative for each segment, and these recommendations were approved by the Intergovernmental Agency on February 23, 2009. The approved segment solutions have been combined to form an Existing Alignment (Widening) Alternative and a Realignment Alternative. These two "Build" alternatives were evaluated, along with the "No-Build" alternative, using the 13 evaluation criteria and associated weightings established by the IA. The results of these evaluations were presented to the public at the Preferred Alternatives Meeting on August 13, 2009. The IA approved staff's recommendation to widen the existing alignment with commitments to protect the environment and to investigate improvements to the West Ditch, Grassy Lake and Black Swamp area at the September 21, 2009 IA meeting. Seventeen Community Representative Meetings have been held through the month of June 2011.

Activities Since Last Period:

1. Finalized Wetland Evaluation Report (WER) and Endangered Species Biological Assessment Report (ESBAR) to address final FDOT comments in preparation for the Public Hearing
2. Transmitted ESBAR to US Fish and Wildlife Service for concurrence
3. Continued follow-up and coordination with US Forest Service on draft commitment language for inclusion in the Preliminary Engineering Report regarding access and stormwater management in the vicinity of the US Forest Service property
4. Continued to address 4(f) issue with Golden Aster Preserve with City staff
5. Received notice to proceed to begin work (initial effort of data collection and stakeholder meetings) on the West Ditch analysis. Scheduled field visit and meetings with identified stakeholders. Began desktop review of available data

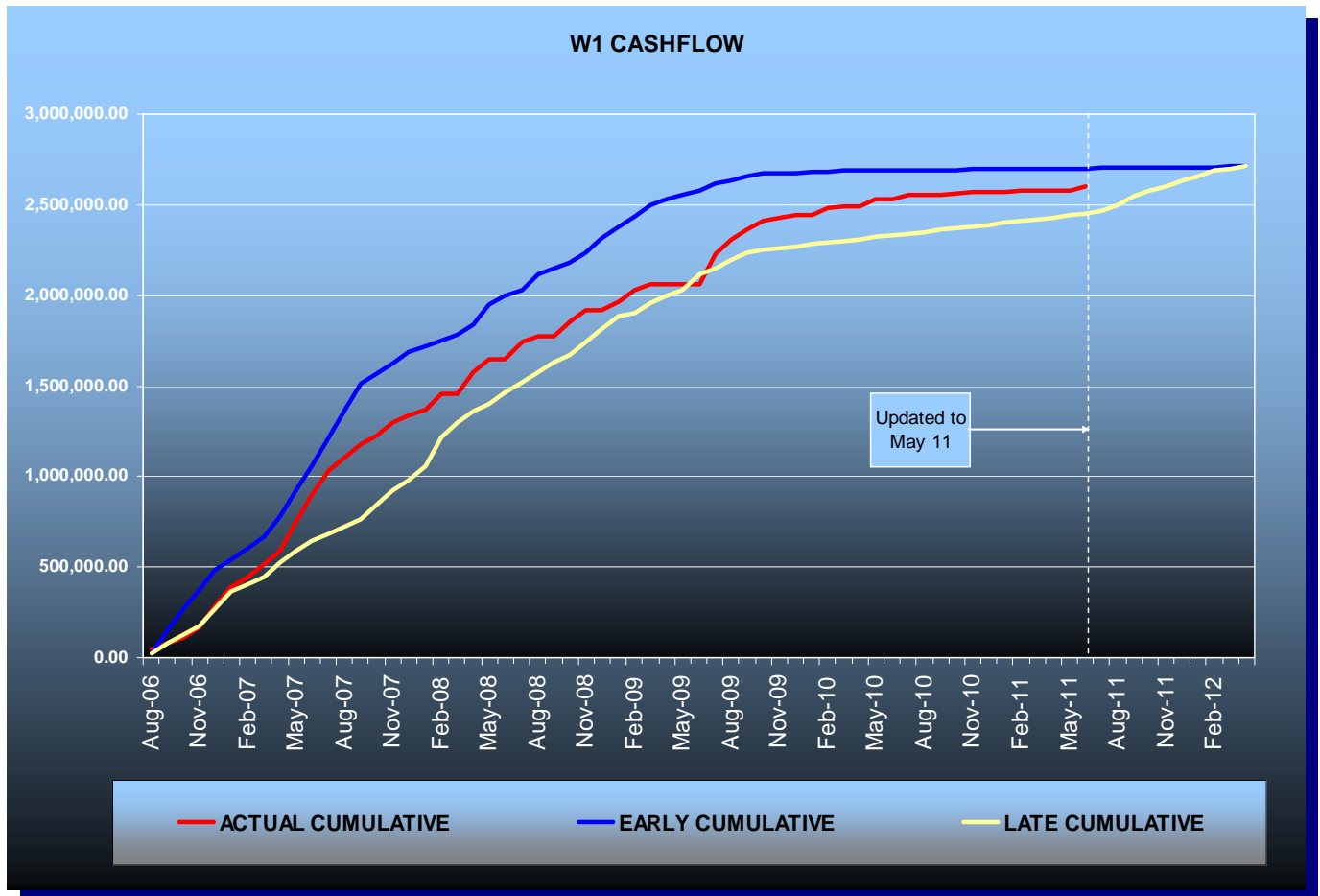
W1 - CAPITAL CIRCLE SW – CRAWFORDVILLE ROAD TO SR 20

Planned Activities for Next Period:

1. Continue coordination with the US Forest Service. Follow-up on commitment language for incorporation in Preliminary Engineering Report
2. Revise Section 4(f) Determination of Applicability to address FDOT final comments, include letter from City on Golden Aster Preserve and submit to FDOT and FHWA
3. Make final draft revisions to the Environmental Assessment (EA) for transmittal to FDOT and FHWA for review
4. Complete revisions to the Preliminary Engineering Report in preparation for the Public Hearing
5. Continue work on the West Ditch analysis. Complete field visit and attend stakeholder meetings scheduled with City and County stormwater staff. Continue desktop analysis
6. Discuss and complete final revisions to the concept plans and other study documents based upon input from the stakeholder meetings
7. Continue with preparation and development of Public Hearing materials

W1 - CAPITAL CIRCLE SW – CRAWFORDVILLE ROAD TO SR 20

Contract Financial Summary of Planned Vs. Actual Costs



E3 - CAPITAL CIRCLE SE – CRAWFORDVILLE ROAD TO WOODVILLE HIGHWAY

Project Description:

This project proposes to widen approximately 1.15 miles of the existing two-lane Capital Circle SE from east of Crawfordville Road to west of Woodville Highway to an ultimate seven-lane facility. The purpose of the roadway improvement project is to increase the capacity and safety of the existing highway. Provisions for future traffic signal will be made at Shelfer Road and the CCSE intersection. The project includes significant landscaping as well as pedestrian, bicycle and recreational amenities.

The project is funded by the 2009 American Recovery and Reinvestment Act (ARRA) Program.

FDOT Roadway ID: 55002000 SR 263

Project Personnel:

Blueprint 2000:	Program Manager:	David Snyder
	Project Manager:	Marek Romanowski
	Construction Manager:	Marcus Kelly
C.W. Roberts/G&O:	CWR Project Manager:	Jonathan Parramore
	Design Manager:	Brian Lemieux

Contract Cost & Schedule Status - Agreement No. /Authorization - As of 6/13/2011

Contract Commencement:	23Oct10
Contract Completion:	14Jun12
Percent of Work Performed:	7.3%
Original Contract Amount:	\$ 8,984,625.00
Executed Supplemental Agreements:	\$ 0.00
Pending Supplemental Agreements:	\$ 0.00
Current Contract Amount:	\$ 8,984,625.00
Invoiced to Date:	\$ 689,503.68
Remaining Contract Amount:	\$ 8,295,121.32
Percent of Contract Amount Complete:	7.7%
Original Contract Time:	600 Days
Contract Time Extensions:	0 Days
Current Contract Time:	600 Days
Contract Time Expended:	233 Days
Contract Time Remaining:	367 Days
Percent Contract Time Expended:	38.8%

Schedule Milestones:

Contract signed	23Sep10
Notice to Proceed (NTP)	22Oct10
Contract completion date	14Jun12

E3 - CAPITAL CIRCLE SE – CRAWFORDVILLE ROAD TO WOODVILLE HIGHWAY

Design Subconsultant Participation:	Contract Amt	% of Design Contract	Expended To Date	FY To Date
HSA Consulting <i>Survey (control, ROW)</i>	\$ 66,202.62	8.85	\$ 56,272.23	\$ 56,272.23
Ardaman & Associates, Inc. <i>Geotechnical</i>	\$ 0.00	0.00	\$ 0.00	\$ 0.00
Poole Engineering <i>Traffic studies, signalization</i>	\$ 35,246.00	4.71	\$ 17,348.00	\$ 17,348.00
Greenhorne & O'Mara <i>Roadway, Landscaping</i>	\$ 646,500.38	86.44	\$ 514,456.81	\$ 514,456.81
Total Design Contract:	\$ 747,949.00	100.00%	\$ 588,077.04	\$ 588,077.04

Design DBE Goal:	\$ 74,794.90	10.00%*
Design DBE to Date:	\$ 73,620.23	12.52%

Construction Subconsultant Participation:	Contract Amt	% of Design Contract	Expended To Date	FY To Date
Gaines & Sons <i>Pavement markings, Erosion ctl</i>	\$ 0.00	0.00	\$ 0.00	\$ 0.00
Hale Contracting, Inc. <i>Curb and Gutter, trucking, drainage</i>	\$ 0.00	0.00	\$ 0.00	\$ 0.00
Florida Developers, Inc. <i>Earthworks, trucking</i>	\$ 0.00	0.00	\$ 0.00	\$ 0.00
Porter Construction, Inc. <i>Drainage structures & pipe</i>	\$ 0.00	0.00	\$ 0.00	\$ 0.00
Solomon Construction Co. of Quincy <i>Water/Sewer utilities</i>	\$ 0.00	0.00	\$ 0.00	\$ 0.00
C.W. Roberts Contracting <i>Prime Contractor</i>	\$ 8,236,676.00	100.00	\$ 101,426.64	\$ 101,426.64
Total Construction Contract:	\$ 8,236,676.00	100.00%	\$ 101,426.64	\$ 101,426.64

Construction DBE Goal:	\$ 823,667.60	10.00%*
Construction DBE to Date:	\$ 0.00	0.00%

* Because this project is being funded with ARRA funding, the FDOT's policies and procedures regarding Disadvantaged Business Enterprise (DBE) Program shall apply. A 10% DBE Availability Goal has been assigned for this project.

E3 - CAPITAL CIRCLE SE – CRAWFORDVILLE ROAD TO WOODVILLE HIGHWAY

The Design-Build Contract was executed on 9/23/2010. Blueprint issued Notice to Proceed (NTP) to the Design-Build Team on 10/22/10. Project kick-off meeting was held on 11/02/10 and the Utility kick-off meeting was held on 11/08/10. The National ARRA Projects Review Team has reviewed this project, and submitted their report to FDOT District 3 on 2/04/11. Project partnering meeting with Blueprint and project stakeholders were conducted on 3/31/11. The Public Information Meeting was conducted on 4/04/11. Ground breaking ceremony was conducted on 5/03/11.

The Project CPM baseline schedule was submitted and updated in this reporting period.

Utility coordination is in progress. City of Tallahassee Water Utility continues design work on relocation, upgrade and adjustment of their facilities. Utility relocation progress meeting was held on 2/08/11. City of Tallahassee Electrical Utility reached agreement with Talquin Electric Cooperative on the purchase of Talquin's distribution line between Crawfordville Road and Woodville Highway. The purchase process is in progress. COT Electric provided the design data to the Design-Build Team for street lighting based on their design of the City's distribution line relocation to the north right-of-way. Blueprint coordinated efforts to establish utility easements and permit requirements with USFS and FDOT. The Design-Build Team and Utility companies continue work on updating and finalizing their facilities relocation schedules.

Environmental and permitting activities are in progress. The Design-Build Team obtained gopher tortoises' relocation permit and completed protection and relocation of threatened and endangered species on site. The Design-Build Team obtained the ERP permit from NFWFMD. The EIA Report is being reviewed by COT GM, and the High Quality Sequential Forest mitigation measures are being resolved by the Design-Build Team. The EMP permit application was submitted to COT Growth Management, and it is contingent upon approval of the EIA.

Project design activities are in progress. The Typical Cross Sections and Pavement Design package was approved. Design-Build Team submitted 90% complete project package for comments on 1/31/11. Blueprint received responses to comments on 90% complete project package and approved environmental permit applications (EMP and ERP). The ERP permit was obtained. The 100% completed project package was submitted to Blueprint for review. Blueprint has provided comments on the submitted component plans and the Design-Build Team is in the process of addressing them.

ARRA documentation monitoring is in progress.

Activities Since Last Period:

1. Responded to Blueprint's comments on 100% complete project plans
2. Continued to coordinate with City Electric regarding data for street lighting design during City's negotiations with Talquin Electric Coop to purchase distribution line by the City
3. Continued to respond to COT GM comments on the submitted design during the EMP permit application process
4. Continued to coordinate mitigation of the High Quality Successional Forest during the EIA application process
5. Coordinated updates and revisions of conflict matrix and utility relocation schedules with utility companies
6. Continued design activities towards the Release for Construction plans
7. Blueprint coordinated utility easements and utility permits requirements with USFS and FDOT

E3 - CAPITAL CIRCLE SE – CRAWFORDVILLE ROAD TO WOODVILLE HIGHWAY

Planned Activities for Next Period:

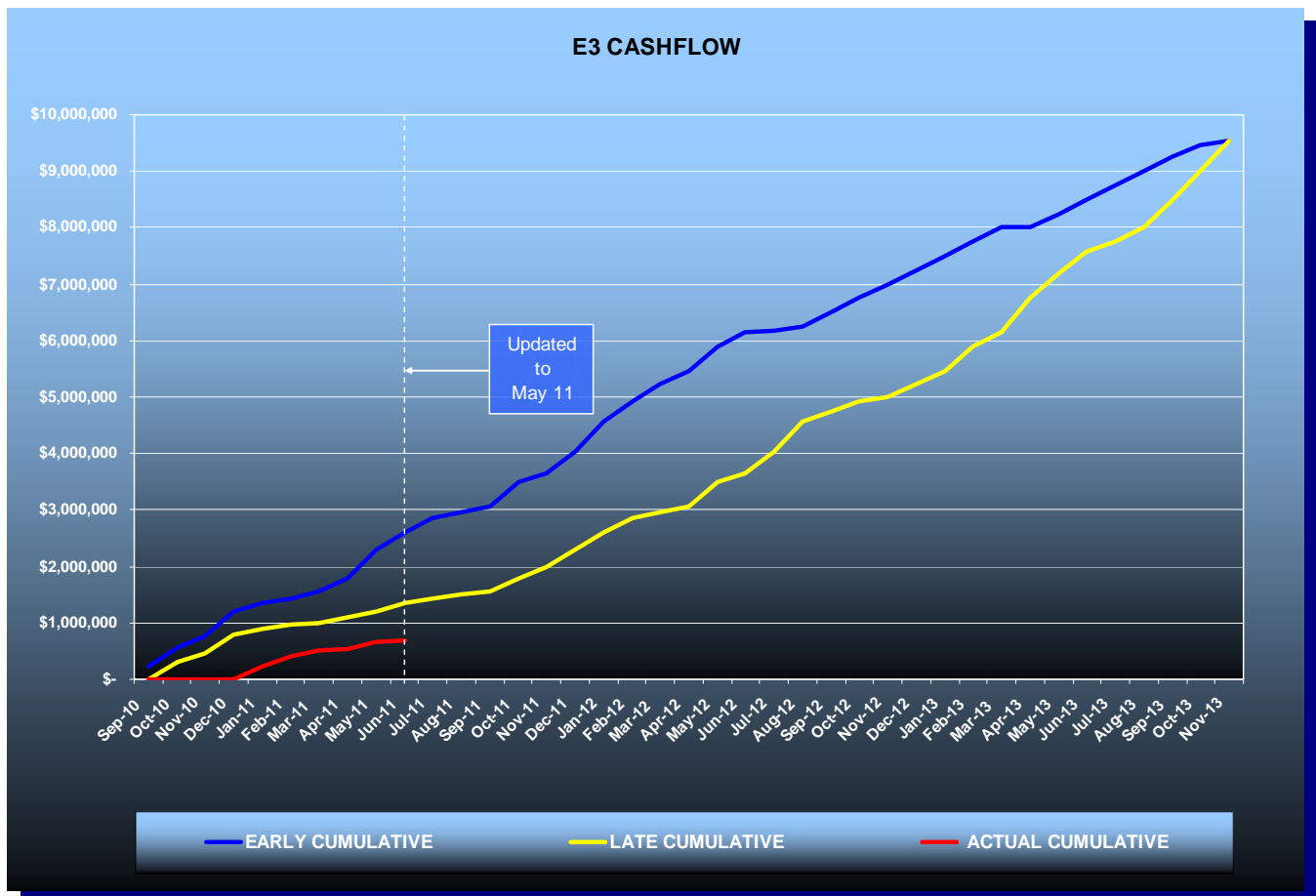
1. Conduct project progress meeting
2. Complete street lighting design and submit the plans for review
3. Obtain COT GM approval of the EIA Report and the EMP permit
4. Complete landscaping plans and submit the plans for review
5. Begin initial project construction tasks including mobilization, erosion control activities and clearing and grubbing
6. Continue utility coordination with emphasis on COT Water/Sewer project work packages and additional work
7. Compile ARRA reporting documentation for next reporting period

Right-of-Way Status Report:

Right-of-Way maps are at 100%. All Right-of-Way has been acquired for this project.

The Highway Easement Deed for Parcel 800 was issued by the Federal Highway Administration to the Florida Department of Transportation on January 16, 2009.

Contract Financial Summary of Planned Vs. Actual Costs



E2 - CAPITAL CIRCLE SE – WOODVILLE HIGHWAY TO TRAM ROAD

Project Description:

This project widened approximately 2.3 miles of the existing two-lane Capital Circle SE from Woodville Highway to Tram Road to an ultimate six-lane facility, mileposts 0.0 to 2.12. In addition, a transitional segment west of Woodville Highway (SR 263, MP 0.0 to approximately MP 0.2) was included. The purpose of the roadway improvement project is to increase the capacity and safety of the existing highway. A new traffic signal was installed at the access to the Lakes at San Marcos development on Woodville Highway, south of CCSE. Provisions for future traffic signals were provided at three intersections: Paul Russell Road, Southchase Boulevard and Marketplace Drive to accommodate proposed developments on the north side of CCSE, between Woodville Highway and Tram Road. The project includes significant landscaping as well as pedestrian, bicycle and recreational amenities.

Project Personnel:

Blueprint 2000:	Program Manager:	David Snyder
	Project Manager:	Marek Romanowski
	Construction Manager:	Marcus Kelly
Sandco Inc./Genesis:	Project Manager:	Bob Myrick
	Design Project Manager:	Jim Sullivan

Contract Cost & Schedule Status - Agreement No. 1464 - As of 04/11/2011

Contract Commencement:	28Aug07
Contract Completion:	13Feb10
Percent of Work Performed:	100.0%
Original Contract Amount:	\$ 17,616,609.90
Executed Supplemental Agreements:	\$ 2,186,141.90
Pending Supplemental Agreements:	\$ 0.00
Current Contract Amount:	\$ 19,802,751.80
Invoiced to Date:	\$ 19,802,751.80
Remaining Contract Amount:	\$ 0.00
Percent of Contract Amount Complete:	100.0%
Original Contract Time:	900 Days
Contract Time Extensions:	269 Days
Current Contract Time:	1169 Days
Contract Time Expended:	1169 Days
Contract Time Remaining:	0 Days
Percent Contract Time Expended:	100.0%

Schedule Milestones:

Contract with Design-Build Team executed	05Jun07
Notice To Proceed	28Aug07
Groundbreaking Ceremony	29Aug07
COT EMP permit for Segment 1B	24Mar08
Project Final Completion Date	22Oct10

E2 - CAPITAL CIRCLE SE – WOODVILLE HIGHWAY TO TRAM ROAD

Design Subconsultant Participation:	Contract Amt	% of Design Contract	Expended To Date	FY To Date
EGS				
<i>Environmental Engineering</i>	\$ 394,170.70	24.45	\$ 394,170.70	\$ 8,952.39
Mehta & Associates, Inc.				
<i>Design Survey</i>	\$ 44,000.00	2.73	\$ 44,000.00	\$ 0.00
Genesis Group (PRIME)				
<i>Prime Consultant of Design Team</i>	\$ 1,173,696.86	72.82	\$ 1,173,696.86	\$ 6,600.00
<hr/>				
Total Design Contract:	\$ 1,611,867.56	100.00%	\$ 1,611,867.56	\$ 15,552.39

Design MBE Goal:	\$ 249,839.47	15.50%
Design MBE to Date:	\$ 438,170.70	27.18%

Construction Subconsultant Participation:	Contract Amt	% of Design Contract	Expended To Date	FY To Date
Florida Developers				
<i>Earthwork, Trucking, Drainage</i>	\$ 1,071,423.62	5.89	\$ 1,071,423.62	\$ 0.00
Gains & Sons				
<i>Striping</i>	\$ 261,042.85	1.44	\$ 261,042.85	\$ 134,397.80
Hawthorn Construction				
<i>Curb & Gutter, Concrete Work</i>	\$ 1,204,291.25	6.62	\$ 1,204,291.25	\$ 3,802.26
Ingram Signalization Inc.				
<i>Signalization</i>	\$ 946,687.00	5.20	\$ 946,687.00	\$ 231,615.40
Tallahassee Contractors				
<i>Trucking, Limerock Base</i>	\$ 560,449.79	3.08	\$ 560,449.79	\$ 0.00
Sandco, Inc (PRIME)				
<i>Prime Contractor of Design-Build Team</i>	\$ 13,585,874.41	74.69	\$ 13,585,874.41	\$ 649,467.61
Pinnacle Construction				
<i>Construction Materials/Delivery</i>	\$ 561,115.32	3.08	\$ 561,115.32	\$ 1,457.52
<hr/>				
Total Construction Contract:	\$ 18,190,884.24	100.00%	\$ 18,190,884.24	\$ 1,020,740.59

Construction MBE Goal:	\$ 3,820,085.69	21.00%
Construction MBE to Date:	\$ 4,605,009.83	25.31%

E2 - CAPITAL CIRCLE SE – WOODVILLE HIGHWAY TO TRAM ROAD

Project Status:

The Design-Build contract was executed on 6/05/07. Utility kick-off meeting was held on 6/27/07. The Pre-construction Conference and the Public Meeting were held on 7/24/07. A Joint Project Agreement (JPA) was entered into by St. Joe Company, City of Tallahassee and Blueprint 2000 on 7/31/07. Per terms of this JPA, easements for five drainage ponds and Right-of-Way donated to the project by St. Joe were obtained from St. Joe. Notice to Proceed was issued to the Design-Build Team on 8/28/07, and the Groundbreaking Ceremony was held on 8/29/07. The Ribbon Cutting Ceremony was held on 11/09/2010.

The National Features Inventory (NFI) report was approved by COT Growth Management. COT Growth Management issued the Environmental Impact Assessment exemption [(EIA short form B (low)] for Segments 1 and 3A in October 2007. The EIA for Segment 2 was approved by COT Growth Management on 12/18/07. The Clearing and Grubbing Permit, including "sediment sumps" located at the future stormwater pond sites, and fill stockpiling permit, were issued by Growth Management for Segments 1 and 3A. The clearing permit for Segment 2 was issued on 1/17/08, with the exception of Pond 600. The clearing permit for Pond 600 was obtained in March 2008. The Stormwater Permit was received from the Department of Environmental Protection. The EMP permit for Segment 1B was obtained from COT Growth Management on 3/24/08, for Segment 1A on 6/27/08 and for Segment 3A on 8/28/08. The EIA for Segment 3B was approved by Growth Management on 5/08/08. The clearing and grubbing permit for Segment 3B was obtained on 7/11/08. The EMP permit application for Segment 2 was issued by Growth Management on 12/19/08. Lighting plans are complete and were released for construction on 2/17/09. Roadway plans were released for construction for Segment 2. Segment 1B EMP permit update for Southchase Boulevard and Marketplace Drive intersections were obtained on 4/07/09. Blueprint reviewed final Traffic Signal plans for Woodville Highway, Southchase Boulevard and Marketplace Drive intersections, and released them for construction on 6/15/09. The EMP permit update for Pond 300 conveyance was obtained on 6/28/09. The EMP permit for Segment 3B was obtained on 7/10/2009. The Management of Traffic (MOT) Plans for the entire project were reviewed by Blueprint and released for construction on 7/17/09. Blueprint reviewed roadway final plans for Segment 3B and released them for construction on 10/14/09. Blueprint released final Signing and Pavement Marking plans for construction on 4/13/10.

The Electrical Resistivity Imaging (ERI) tests are complete for Ponds 200, 300, Pond 300 conveyance easement and Pond 600. The ERI test results at Pond 200 and Pond 600, and the soil borings at Pond 600 indicated that all pond sites are acceptable for pond locations, and no further investigations were recommended. Karst investigations at Ponds 100 and 100A are complete. Additional borings were advanced at Pond 100A, and mitigation alternatives were prepared for that pond. Karst investigations were conducted at Segment 3A sinkhole and additional borings were advanced to establish the need for mitigation measures. The final report, including recommendations, was submitted to Blueprint on 7/17/09. Blueprint coordinated with FDOT regarding mitigation for the sinkholes. Several small diameter voids were discovered during construction of the CCSE westbound lanes, which were backfilled with embankment material or fly-ash grout and sealed with clay or geotextile.

Utility relocation, adjustments and new installations are complete. Sanitary gravity sewer lines are complete. A 12 inch "bleed-off" sanitary sewer system was installed in the southeast quadrant of CCSE and Woodville Highway intersection. The Air Release Valve vaults were placed on 42" and 36" sanitary force mains. Installation of drainage pipes and structures is complete on the whole project.

Road construction up to the top of friction course, including the thermoplastic pavement markings and traffic signing are complete on this project.

E2 - CAPITAL CIRCLE SE – WOODVILLE HIGHWAY TO TRAM ROAD

Project Status (continued):

Permanent traffic signal installations at the Lakes at San Marcos intersection on Woodville Highway and on CCSE intersections with Woodville Highway and Marketplace Drive are complete. Landscaping revisions are now complete, and the work on the punch list is complete.

The Dispute Resolution Board (DRB) meeting was held on 9/17/10.

The Project was finally accepted on 10/22/2010. Final offer of payment was accepted by the contractor on 12/14/10.

Activities Since Last Period:

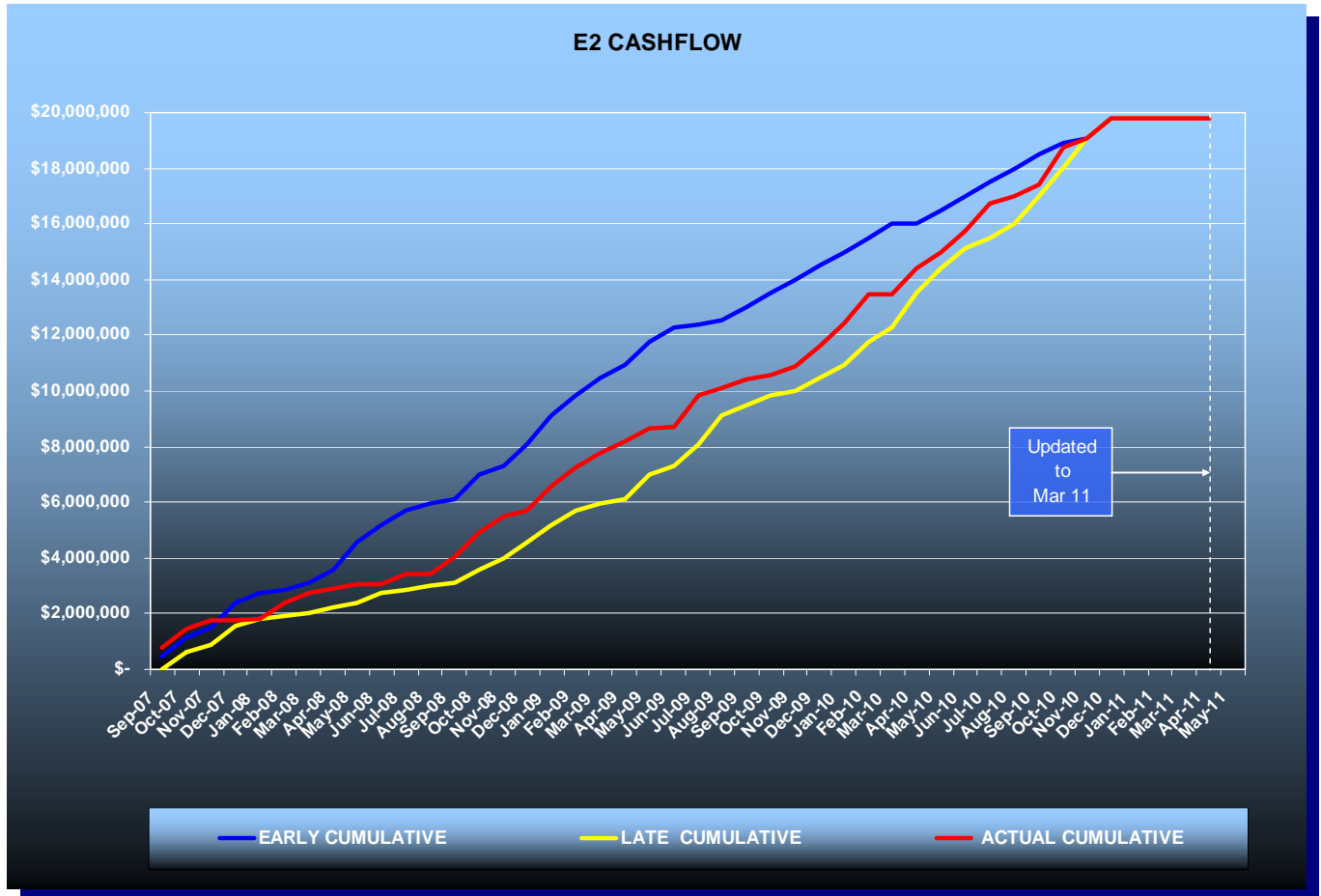
1. Continue maintenance activities on warranty items
2. Continue coordination with project stakeholders as required

Planned Activities for Next Period:

1. Continue maintenance activities on warranty items
2. Continue coordination with project stakeholders as required
3. Coordinate design and construction of American Towers access
4. Coordinate project monumentation and ROW transfer to FDOT

E2 - CAPITAL CIRCLE SE – WOODVILLE HIGHWAY TO TRAM ROAD

Contract Financial Summary of Planned Vs. Actual Costs



Right-of-Way Status Report:

Blueprint is in possession of all parcels. One parcel is still in litigation.

E1 - CAPITAL CIRCLE SE – CONNIE DRIVE TO TRAM ROAD

Project Description:

The 3.44-mile project along Capital Circle Southeast (US 319/SR 261) extends from south of Tram Road to Connie Drive (milepost 1.931 and 5.371) in Leon County and includes expanding the existing two-lane undivided rural roadway to a six-lane divided urban (curb and gutter) facility. The purpose of the roadway improvement project is to increase the capacity and safety of the existing highway. New traffic signals, including ITS features, were provided at six intersections: Tram Road, Shumard Oak Boulevard, Merchants Row Drive, Blair Stone Road, Orange Avenue and Old St. Augustine Road. The project also includes significant landscaping as well as pedestrian, bicycle and recreational amenities.

Project Personnel:

Blueprint 2000:	Program Manager:	David Snyder
	Project Manager:	Marek Romanowski
	Construction Manager:	Marcus Kelly
Joint Venture/PBS&J:	Project Director, JV:	William Mayfield
	Project Mgr., PBS&J:	Steve Martin

Project Status:

Blueprint 2000 issued Final Acceptance Letter for this project on 6/16/08.

The total contract duration was 1253 calendar days.

The final construction cost was \$37,715,142.

M/WBE Participation: Design 18.01% Construction 25.17%

Right-of-Way Status Report:

Blueprint is in possession of all parcels.

C2 - CAPITAL CASCADES TRAIL – SEGMENT 2

Project Description:

Capital Cascades Park Construction

Project Personnel:

Blueprint 2000:	Project Manager:	Gary Phillips
	CEI Project Manager:	Marcus Kelly
Sandco:	Project Manager:	Jeff Sprouse

Contract Cost & Schedule Status - As of 6/13/2011

Contract Commencement:	06Jul10
Contract Completion:	9/21/2012
Percent of Work Performed:	40.0%
Original Contract Amount:	\$ 22,970,011.43
Executed Supplemental Agreements:	\$ 0.00
Pending Supplemental Agreements:	\$ 0.00
Current Contract Amount:	\$ 22,970,011.43
Invoiced to Date:	\$ 9,625,781.50
Remaining Contract Amount:	\$ 13,344,229.93
Percent of Contract Amount Complete:	41.9%
Original Contract Time:	730 Days
Contract Time Extensions:	78 Days
Current Contract Time:	808 Days
Contract Time Expended:	344 Days
Contract Time Remaining:	464 Days
Percent Contract Time Expended:	42.6%

C2 - CAPITAL CASCADES TRAIL – SEGMENT 2

Design Subconsultant Participation:	Contract Amt	% of Design Contract	Expended To Date
Archaeological Consultants Inc. <i>Archaeological Services</i>	\$ 32,794.68	0.83	\$ 32,794.68
Environmental and Geotechnical Specialist <i>Geotechnical</i>	\$ 258,247.95	6.54	\$ 258,247.95
Akin Associates Architects <i>Architectural</i>	\$ 166,743.07	4.22	\$ 166,743.07
Moore Bass <i>Land Planning</i>	\$ 4,456.16	0.11	\$ 4,456.16
Uzzell Advertising <i>Public Relations</i>	\$ 14,062.61	0.36	\$ 14,062.61
Carr, Lynch, Sandell <i>Park Design</i>	\$ 599,376.82	15.18	\$ 599,376.82
Jennings Environmental <i>Environmental</i>	\$ 27,198.52	0.69	\$ 27,198.52
Pinnacle Engineering Group <i>MEP</i>	\$ 118,367.72	3.00	\$ 118,367.72
CDM <i>Stormwater</i>	\$ 183,410.00	4.64	\$ 183,410.00
Genesis Group <i>Prime</i>	\$ 2,236,946.25	56.64	\$ 2,236,946.25
PBS&J/Brown and Caldwell <i>Water Quality</i>	\$ 97,316.00	2.46	\$ 97,316.00
Garcia Bridge Engineers <i>Bridge Design</i>	\$ 191,424.84	4.85	\$ 191,424.84
Rosenbaum <i>Park Design</i>	\$ 4,040.00	0.10	\$ 4,040.00
Peter Martin <i>Park Design</i>	\$ 14,960.00	0.38	\$ 3,204.95
<hr/>			
Total Design Contract:	\$ 3,949,344.62	100.00%	\$ 3,937,589.57

Design M/WBE Goal:	\$ 612,148.42	15.50%
Design M/WBE to Date:	\$ 667,729.31	20.00%

****Please Note: Carr, Lynch and Sandell's contract amount is not contained in the M/WBE calculation.**

C2 - CAPITAL CASCADES TRAIL – SEGMENT 2

Construction Subconsultant Participation:	Contract Amt	% of Design Contract	Expended To Date	FY To Date
<i>Metal Fabrication</i>				
<i>Railing, Bridges, Metal, Fabrication</i>	\$ 1,000,000.00	4.35	\$ 16,229.80	\$ 16,229.80
<i>Hawthorne Construction</i>				
<i>Concrete Work</i>	\$ 750,000.00	3.27	\$ 92,760.68	\$ 92,760.68
<i>Ingram Signalization</i>				
<i>Signalization</i>	\$ 270,000.00	1.18	\$ 54,171.72	\$ 54,171.72
<i>Crosspoint</i>				
<i>Underground Utilities</i>	\$ 1,000,000.00	4.35	\$ 1,006,882.46	\$ 1,006,882.46
<i>Pinnacle Construction Support</i>				
<i>Construction Management</i>	\$ 1,840,000.00	8.01	\$ 70,953.95	\$ 70,953.95
<i>Sandco</i>				
<i>Prime</i>	\$ 18,110,011.43	78.84	\$ 8,384,782.89	\$ 6,209,255.60
<hr/>				
Total Construction Contract:	\$ 22,970,011.43	100.00%	\$ 9,625,781.50	\$ 7,450,254.21

Construction MB E Goal:	\$ 4,823,702.40	21.00%
Construction MB E to Date:	\$ 1,240,998.61	12.89%

Activities Since Last Period:

1. Constructed Limerock facade on RW-58
2. Continued RW-44 excavation
3. Installed re-use water line to CSX bridge trestle and capped
4. Completed milling and resurfacing/reconstruction at Gadsden Street and Myers Park Drive
5. Continued to construct Alum Injection Vault/Slab
6. Began construction of box culvert from FDOT Parking lot north to Pensacola Street
7. Working to complete Sanitary Sewer Construction in Upper Park
8. Constructed Diversion Ditch and Weir
9. Mass excavation of lower pond
10. Relocate electric overhead lines and light pole at Lafayette Street

C2 - CAPITAL CASCADES TRAIL – SEGMENT 2

Planned Activities for Next Period:

1. Continue to review and process Request for Additional Information
2. Begin Alum Injection Vault waterproofing
3. Begin RW-43 construction
4. Begin RW-18 backfill
5. Complete Sanitary Sewer construction in Upper Park
6. Place Electric underground along Meridian Street
7. Continue box culvert construction to Pensacola Street
8. Sidewalk construction in lower park
9. Begin irrigation installation in lower park
10. Continue Multi-Use Trail and sidewalk construction
11. Continue Mass excavation of lower pond



Boca Chuba Pond

C2 - CAPITAL CASCADES TRAIL – SEGMENT 2



Construction of Cascades Fountain

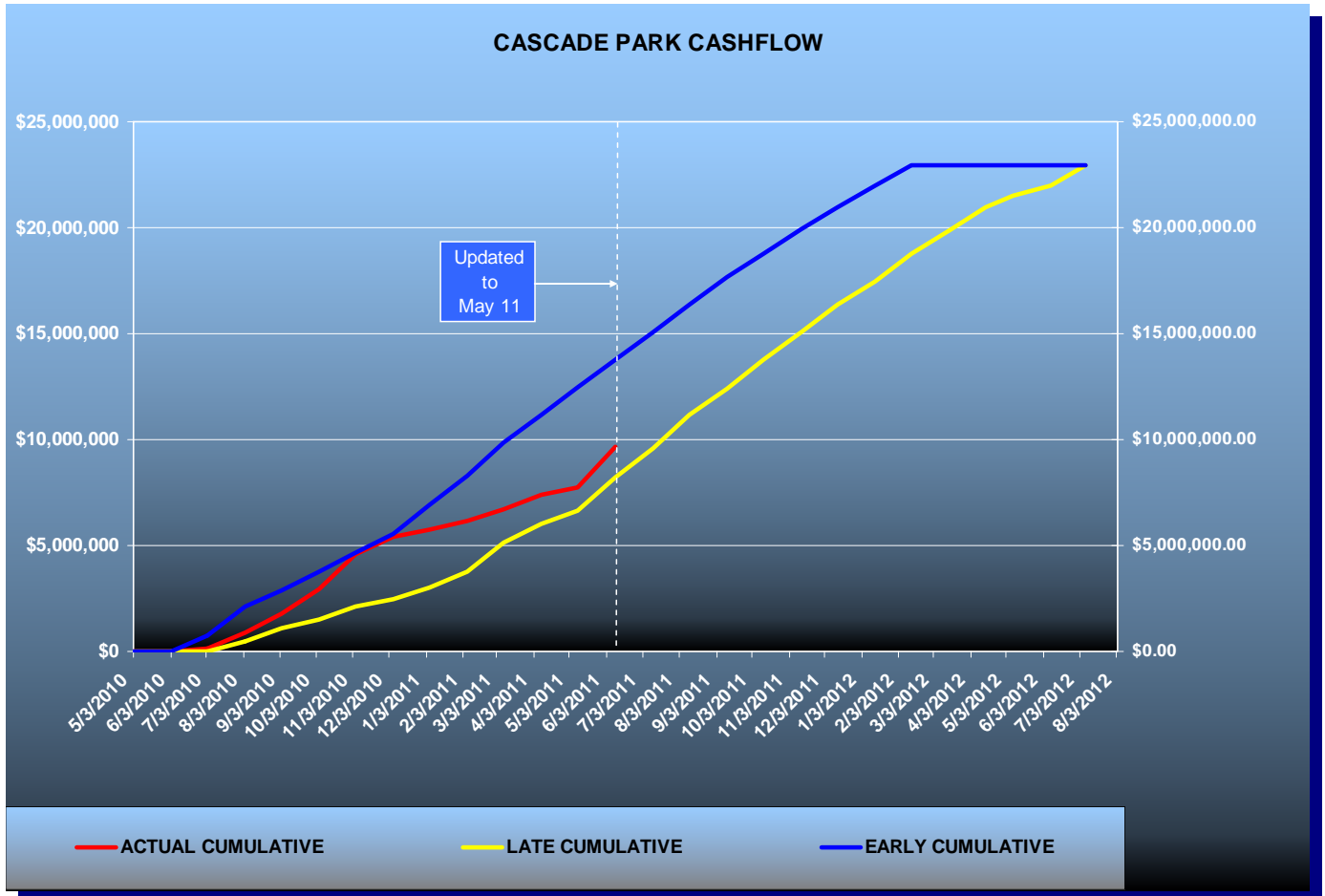
C2 - CAPITAL CASCADES TRAIL – SEGMENT 2



Native American Motif on Retaining Walls 56 and 57

C2 - CAPITAL CASCADES TRAIL – SEGMENT 2

Contract Financial Summary of Planned Vs. Actual Costs



C3 & C4 - CAPITAL CASCADES TRAIL – SEGMENTS 3 AND 4 DESIGN

Project Description:

Phase 2 tasks have been authorized and include the following major elements:

- Design and permitting for a box culvert between South Monroe Street and Adams Street
- Design and permitting for Coal Chute Pond
- 60% Construction documents for Black Swamp Nature Park

Project Personnel:

Blueprint 2000:	Planning Manager:	David Bright
	Program Manager:	Dave Snyder
	Project Manager:	Gary Phillips
Kimley-Horn:	Project Manager:	Richard Barr

Contract Cost & Schedule Status - Agreement No. 1736/Authorization #1 - As of 6/13/2011

Contract Commencement:	01Jun08
Contract Completion:	5/3/2012
Percent of Work Performed:	70.0%
Original Contract Amount:	\$ 1,057,759.98
Executed Supplemental Agreements:	\$ 1,748,116.00
Pending Supplemental Agreements:	\$ 0.00
Current Contract Amount:	\$ 2,805,875.98
Invoiced to Date:	\$ 2,065,276.00
Remaining Contract Amount:	\$ 740,599.98
Percent of Contract Amount Complete:	73.6%
Original Contract Time:	365 Days
Contract Time Extensions:	1067 Days
Current Contract Time:	1432 Days
Contract Time Expended:	1109 Days
Contract Time Remaining:	323 Days
Percent Contract Time Expended:	77.4%

Schedule Milestones:

IMC Approval	27May08
Contract Executed	29May09
Phase 2 Kick-Off Meeting	11Aug09
Box Culvert Deliverables	26Sep10
Coal Chute Pond Deliverables	17Nov10
Segment 3 30% Design	01Jun11

C3 & C4 - CAPITAL CASCADES TRAIL – SEGMENTS 3 AND 4 DESIGN

Design Subconsultant Participation:	Contract Amt	% of Design Contract	Expended To Date	FY Year To Date
Tampa Bay Engineering <i>Utility Investigation</i>	\$ 80,445.89	2.87	\$ 56,750.89	\$ 0.00
3DS <i>Surveying/Right-of-Way Services</i>	\$ 454,950.00	16.21	\$ 443,421.67	\$ 53,369.17
Cheryl Johnson <i>Model Review</i>	\$ 14,750.00	0.53	\$ 5,148.00	\$ 0.00
In-Situ <i>Stream Gage installation and monitoring</i>	\$ 32,000.00	1.14	\$ 32,000.00	\$ 0.00
Biological Research & Associates <i>Environmental</i>	\$ 48,500.00	1.73	\$ 48,500.00	\$ 0.00
CDM <i>Stormwater Modeling and Design</i>	\$ 286,381.00	10.21	\$ 244,938.92	\$ 21,641.00
Kimley-Horn <i>Prime - Data Collection, Environmental , Project M</i>	\$ 1,791,602.09	63.85	\$ 1,211,336.83	\$ 527,713.41
Environmental and Geotechnical Specialist <i>Geotechnical</i>	\$ 92,916.00	3.31	\$ 23,179.69	\$ 0.00
Search <i>Cultural Resources</i>	\$ 4,331.00	0.15	\$ 0.00	\$ 0.00
<hr/>				
Total Design Contract:	\$ 2,805,875.98	100.00%	\$ 2,065,276.00	\$ 602,723.58

Design MBE Goal:	\$ 434,910.78	15.50%
Design MBE to Date:	\$ 466,601.36	22.59%

C3 & C4 - CAPITAL CASCADES TRAIL – SEGMENTS 3 AND 4 DESIGN

Project Status and Right-of-Way Status Report:

The proposed Coal Chute Pond is a downtown regional stormwater facility that will be an integral part of the proposed redevelopment of central Tallahassee. The pond will be an offline facility that provides retrofit stormwater treatment and aids in flood control for the watershed, as well as providing treatment volume and attenuation for approximately 43 acres of new downtown development.

Coal Chute Pond will be permitted through the City of Tallahassee and Northwest Florida Water Management District or the Florida Department of Environmental Protection as a regional stormwater facility allowing redevelopment stormwater capacity to be allocated for future use by redevelopment along the Gaines Street corridor, within the adjacent Railroad Square, and along the future FAMU Way corridor. As the proposed redevelopment occurs, the developer will submit a Capacity Accounting Record to the permitting agency updating the amount of stormwater used to date and the remaining amount available on the basis of impervious surface. The capacity of the pond may potentially be extended to additional redevelopment areas through the use of incentives for sustainable development that encourages onsite capture of stormwater and use of innovative technology, such as pervious pavement and green roofs, to reduce onsite impervious surfaces.

Blueprint identified ten parcels of land which needed to be acquired for the construction of Coal Chute Pond. As of this date, all parcels are owned by Blueprint except for three parcels that will be going to suit. A hearing will be scheduled for June with title expected on the three outstanding parcels by July-August 2011.

Activities Since Last Period:

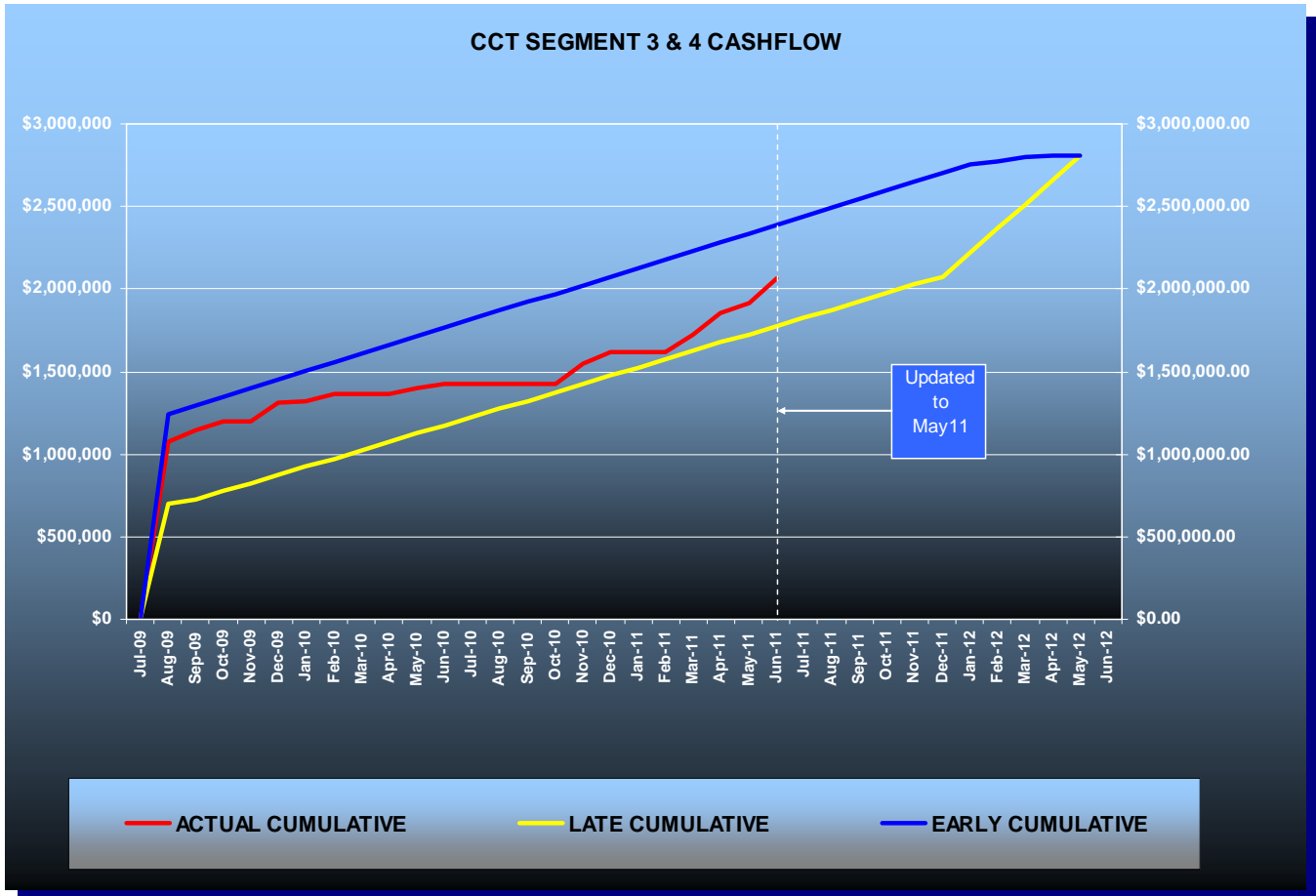
1. Resolved survey datum issue with the City (FAMU Way vs. Segment 3). Requested existing Segment 3 survey to be recertified on NAVD 88
2. Added East Stilling Pond to Proposed Condition Model and exhibits
3. Completed work on calibration and validation effort for XPSWMM models
4. Began preliminary design of Van Buren Pond and Stilling Ponds to include in 30% design plans
5. Continued work on draft 60% plans for Coal Chute Pond based on the original pond concept plus wet element below previous pond bottom
6. Completed revised and submitted for Blueprint review supporting data for 60% plans for box culvert from Monroe Street to Adams Street
7. Submit 60% plans and report for box culvert from Monroe Street to Adams Street to the City for review and permit and to FDEP for permit. Submit NFI for this project
8. Attended FAMU Way coordination meeting

Planned Activities for Next Period:

1. Receive requested existing Segment 3 survey to be recertified on NAVD 88 and begin redesign based on this survey datum
2. Continue XPSWMM modeling efforts with Proposed Condition model
3. Incorporate City Model for Segment 4 into XPSWMM modeling
4. Incorporate a conceptual design of Pond 5 into the XPSWMM modeling
5. Compare proposed stormwater quality improvement to conceptual stormwater improvement from original concept design using CoTNSLMM2 model
6. Submit 60% Coal Chute Pond design based original pond concept plus wet element below previous pond bottom for client review
7. Submit Coal Chute Pond revised NFI, City EMP, and FDEP ERP
8. Start preparing modeling report

C3 & C4 - CAPITAL CASCADES TRAIL – SEGMENTS 3 AND 4 DESIGN

Contract Financial Summary of Planned Vs. Actual Costs



FB - FRANKLIN BOULEVARD FLOOD RELIEF PROJECT (FB)

Project Description:

Franklin Boulevard Drainage Improvements Design & Permitting project received funding assistance from the U.S. Department of Housing and Urban Development (HUD). It is Segment 1 of the Capital Cascades Trail project, and the elements of this project will be designed and permitted as primary drainage improvements along this Trail Segment. The project will provide drainage improvements to approximately 2,300 feet of existing, undersized and hydraulically insufficient open stormwater conveyance, provide an additional conveyance under Tennessee Street, and provide a hydraulic connection to the existing drainage ditch and storm sewer system at Leon High School. The existing open drainage conveyance will be replaced with a continuous concrete box culvert designed to provide flood relief along Franklin Boulevard.

Project Personnel:

Blueprint 2000:	Program Manager:	David Snyder
	Project Director:	Gary Phillips
	Project Manager:	Marek Romanowski
Genesis Group:	Project Principal:	Mark Llewellyn
	Design Project PM:	Echo Gates

Contract Cost & Schedule Status - As of 6/13/2011

Contract Commencement:	04Jan11
Contract Completion:	30Sep11
Percent of Work Performed:	41.8%
Original Contract Amount:	\$ 671,294.51
Executed Supplemental Agreements:	\$ 0.00
Pending Supplemental Agreements:	\$ 0.00
Current Contract Amount:	\$ 671,294.51
Invoiced to Date:	\$ 280,449.58
Remaining Contract Amount:	\$ 390,844.93
Percent of Contract Amount Complete:	41.8%
Original Contract Time:	269 Days
Contract Time Extensions:	0 Days
Current Contract Time:	269 Days
Contract Time Expended:	160 Days
Contract Time Remaining:	109 Days
Percent Contract Time Expended:	59.5%

Schedule Milestones:

Contract commencement	04Jan11
Contract completion date	30Sep11

FB - FRANKLIN BOULEVARD FLOOD RELIEF PROJECT (FB)

Design Subconsultant Participation:	Contract Amt	% of Design Contract	Expended To Date	FY Year To Date
EGS				
<i>Geotechnical</i>	\$ 39,985.78	5.96	\$ 21,625.36	\$ 21,625.36
Garcia Bridge Engineers				
<i>Bridge Design</i>	\$ 45,023.36	6.71	\$ 1,954.84	\$ 1,954.84
Genesis Engineering				
<i>Engineering</i>	\$ 535,585.94	79.78	\$ 256,869.38	\$ 256,869.38
Genesis Design				
<i>Design</i>	\$ 37,739.43	5.62	\$ 0.00	\$ 0.00
Cardo TBE				
<i>Surveying</i>	\$ 12,960.00	1.93	\$ 0.00	\$ 0.00
<hr/>				
Total Design Contract:	\$ 671,294.51	100.00%	\$ 280,449.58	\$ 280,449.58

Design MBE Goal:	\$ 104,050.65	15.50%
Design MBE to Date:	\$ 23,580.20	8.41%

Project Status:

The Federal Environmental Assessment process is complete and the environmental permit coordination is in progress. The Natural Features Inventory Report was approved by the City. The Environmental Impact Assessment (EIA) Report was submitted to the City and is presently being reviewed.

The project schedule was updated in this reporting period and accepted.

Utility coordination continues. The design team has conducted several utility meetings and forwarded project's topographic survey to utility companies. The utility companies provided further data of existing utilities locations to the design team. The utility relocation schedule for the project is based on the intended temporary relocation of the City Electric's overhead distribution line to the inside southbound lane. This will allow installation of the proposed Franklin Boulevard box culvert without major disruption to the existing underground utilities, especially high-pressure gas main located under inside northbound lane. The utility relocation sheets are in progress. The COT Water Utility scope of work and utility relocation sheets for all existing utilities is in progress. The management of traffic on Franklin Boulevard under the scenario described above is being worked on and will be discussed with the City and Leon County to obtain their concurrence for temporary traffic lanes closure.

The Geotechnical Investigations Report is complete. The design team continues preparation of the project construction documents at 60% phase of completion. Hydraulic design, including Franklin Boulevard box culvert modeling, is substantially complete. The results of the water surface modeling on Franklin Boulevard are satisfactory and meet environmental and drainage requirements of the permitting agencies. Some adjustments may be necessary as the project develops to higher stages of completion.

FB - FRANKLIN BOULEVARD FLOOD RELIEF PROJECT (FB)

Activities Since Last Period:

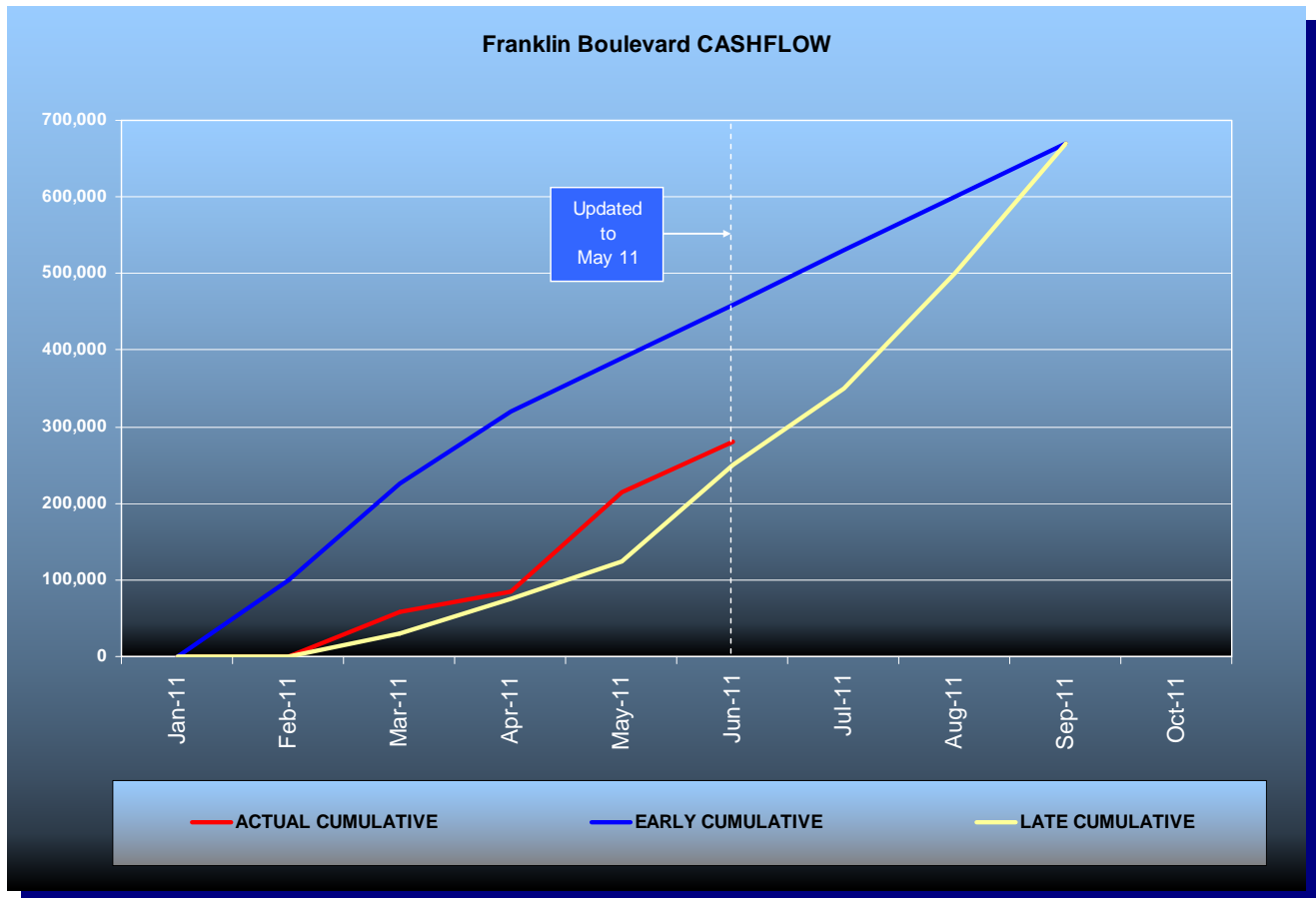
1. Conducted project progress/utility, drainage and constructability meetings
2. Made modification to and updated the substantially completed hydraulic design of the proposed Franklin Boulevard box culvert
3. Submitted the 60% complete construction documents to Blueprint, received and addressed Blueprint comments
4. Continued to develop concepts of MOT and constructability alternatives
5. Coordinated development of Franklin Boulevard construction interface at Pensacola Street with CCT-Segment 2 contractor
6. Continued work on the Environmental Management Permit (EMP) application
7. Continued utility coordination with individual utility companies
8. Reviewed design criteria and Initiated landscaping design

Planned Activities for Next Period:

1. Complete details of the proposed box culvert hydraulic design and side street connections
2. Continue project plans and documentation development towards 90% completion
3. Coordinate drainage, MOT and utility adjustments at East Tennessee Street with FDOT
4. Continue to coordinate construction sequence, traffic lane closures or complete closure of Franklin Boulevard with COT and Leon County
5. Obtain the Environmental Impact Assessment (EIA) approval from the COT GM
6. Prepare EMP permit application and submit it to COT GM
7. Continue permit application process
8. Continue utility coordination

FB - FRANKLIN BOULEVARD FLOOD RELIEF PROJECT (FB)

Contract Financial Summary of Planned Vs. Actual Costs



CAPITAL CASCADES CONNECTOR BRIDGE

Project Description:

The Capital Cascades Connector Bridge will cross over South Monroe Street (SR 61) and connect the Capital Cascades Trail - Segment 2 (Cascades Park) with Capital Cascades Trail - Segment 3. The project limits extend from the end of CCT- Segment 2 just south of Van Buren Electric Building parking area on the west side of Gadsden Street to east side of South Adams Street, a distance of approximately 1,150 feet. The project is in two phases. Phase 1 is 30% design and Phase II is 100% design and permitting.

Project Personnel:

Blueprint 2000:	Project Manager:	Gary Phillips
	Program Manager:	David Snyder
FIGG:	Design Project Manager:	Jeff Walters

Contract Cost & Schedule Status - Agreement No. 2428/Authorization LOA - As of 6/13/2011

Contract Commencement:	10Mar11
Contract Completion:	11/30/2011
Percent of Work Performed:	20.0%
Original Contract Amount:	\$ 250,000.00
Executed Supplemental Agreements:	\$ 0.00
Pending Supplemental Agreements:	\$ 0.00
Current Contract Amount:	\$ 250,000.00
Invoiced to Date:	\$ 42,308.67
Remaining Contract Amount:	\$ 207,691.33
Percent of Contract Amount Complete:	16.9%
Original Contract Time:	265 Days
Contract Time Extensions:	0 Days
Current Contract Time:	265 Days
Contract Time Expended:	98 Days
Contract Time Remaining:	167 Days
Percent Contract Time Expended:	37.0%

Schedule Milestones:

Kick-off Meeting	13Apr11
Design Charrette	14May11
60% Design	31Aug11
Final Plans	30Nov11

CAPITAL CASCADES CONNECTOR BRIDGE

Design Subconsultant Participation:	Contract Amt	% of Design Contract	Expended To Date	Year To Date
EGS				
<i>Geotechnical</i>	\$ 24,865.00	22.95	\$ 7,447.35	\$ 7,447.35
3DS				
<i>Surveying</i>	\$ 16,203.00	14.95	\$ 324.06	\$ 324.06
Kimley Horn				
<i>Trail Design and Permitting</i>	\$ 16,752.00	15.46	\$ 0.00	\$ 0.00
FIGG				
<i>Bridge Design</i>	\$ 50,530.00	46.64	\$ 34,537.26	\$ 34,537.26
<hr/>				
Total Design Contract:	\$ 108,350.00	100.00%	\$ 42,308.67	\$ 42,308.67

Design MBE Goal:	\$ 16,794.25	15.50%
Design MBE to Date:	\$ 7,771.41	18.37%

Activities Since Last Period:

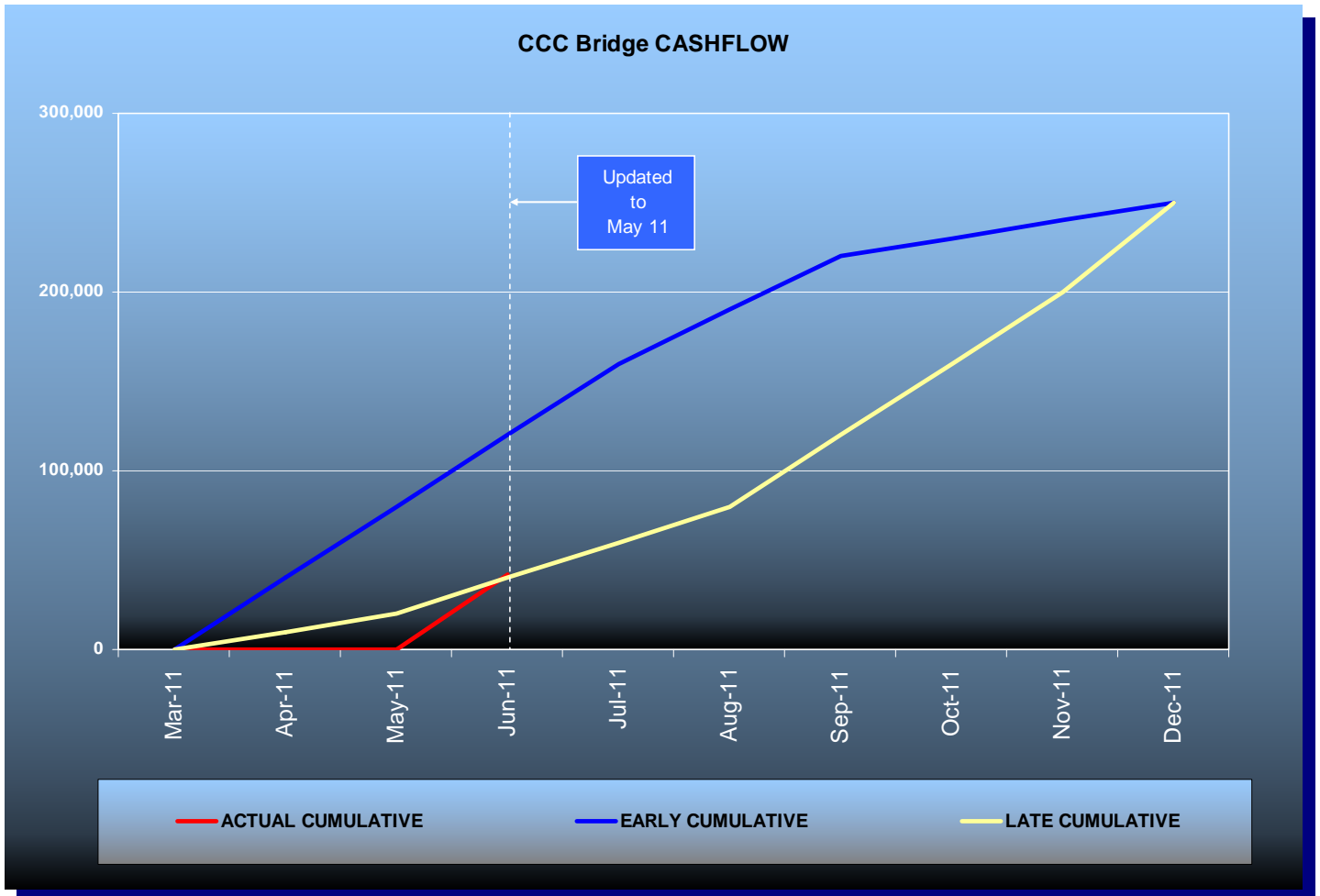
1. Prepared for June 2 CAC and June 20 Intergovernmental Agency Meetings
2. Continued Geotechnical Investigations
3. Continued Design Survey
4. Refined Bridge and trail design based on charette

Planned Activities for Next Period:

1. Begin Preliminary Bridge Design
2. Begin Preliminary Park and Landscape/Hardscape Design
3. Complete Survey and Geotechnical Investigations

CAPITAL CASCADES CONNECTOR BRIDGE

Contract Financial Summary of Planned Vs. Actual Costs



ACRONYM GLOSSARY

ACOE	Army Corps of Engineers
ARRA	American Recovery and Reinvestment Act
CAC	Citizens Advisory Committee
CDM	Camp, Dresser & McKee Inc.
CEI	Construction Engineering & Inspection
CLOMR	Conditional Letter of Map Revision
COT	City of Tallahassee
CR	Community Representative
CRA	Community Redevelopment Agency
CRCDD	Capital Region Community Development District
CRTPA	Capital Region Transportation Planning Agency
DB	Design-Build
DHR	Department of Historical Resources
DMS	Department of Management Services
DRB	Dispute Resolution Board
ECMP	Environmental Construction Management Plan
EIA	Environmental Impact Assessment
EIS	Environmental Impact Study
EMP	Environmental Management Permit
ERP	Environmental Resource Permit
ETD	Earned to Date
ETDM	Efficient Transportation Decision Making
FCT	Florida Communities Trust
FDEP	Florida Department of Environmental Protection
FDOT	Florida Department of Transportation
FEMA	Federal Emergency Management Agency
FHWA	Federal Highway Administration
FWC	Florida Fish & Wildlife Conservation Commission

ACRONYM GLOSSARY

FY	Fiscal Year (For Blueprint 2000, October to September)
GEC	General Engineering Consultant
GM	Growth Management
HASP	Health and Safety Plan
IA	Intergovernmental Agency
IC/RC	Institutional Controls/Restrictive Covenants
IFB	Invitation For Bid
ITE	Institute of Transportation Engineers
JPA	Joint Participation Agreement
LAP	Local Agency Program
LCPWD	Leon County Public Works Department
LDCA	Location Design Concept Approval
LOA	Letter of Authorization
LOMR	Letter of Map Revision
M/WBE	Minority/Women Business Enterprise
MOT	Maintenance of Traffic
MSE	Mechanically Stabilized Earth
MSSW	Management and Storage of Surface Waters
NFI	Natural Features Inventory
NTP	Notice to Proceed
NFWFMD	Northwest Florida Water Management District
OT	Order of Taking
PD&E	Project Development and Environmental
RFP	Request for Proposals
RFQ	Request for Qualifications
ROW	Right-of-Way
RW	Retaining Wall
SAB	St. Augustine Branch

ACRONYM GLOSSARY

SFMP	Stormwater Facility Management Plan
SHPO	State Historic Preservation Officer
SUE	Subsurface Utility Engineering
SWPPP	Stormwater Pollution Prevention Plan
TCC	Technical Coordinating Committee
TCE	Temporary Construction Easement
TIITF	Trustees of the Internal Improvement Trust Fund
UAO	Utility Agency/Owner
USEPA	United States Environmental Protection Agency
USFS	United States Forest Service
USFWS	US Fish and Wildlife Service
VE	Value Engineering
YTD	Year to Date