

PREFERRED ALTERNATIVE MEETING

Come to the Preferred Alternative Meeting to review the results of the analyses completed for the two alternatives. This will be an opportunity for you to assist the project team in evaluating the analysis results and to share with the project team, which alternative you believe should be presented to the Intergovernmental Agency as the preferred alternative.

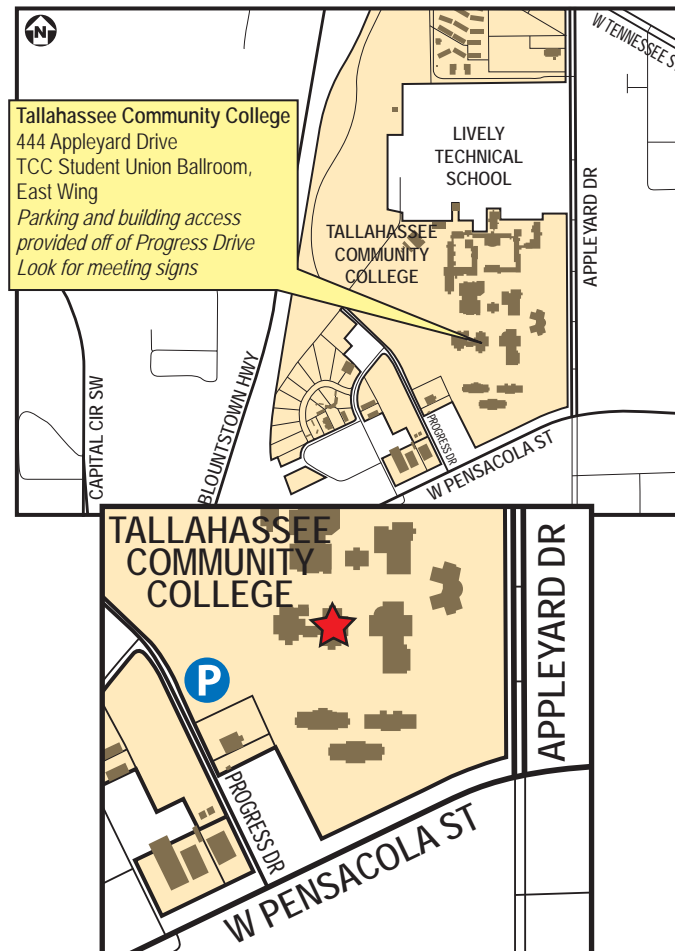
Don't miss this opportunity to help shape the future of this community.

**Thursday, August 13, 2009
5:30 p.m. to 7:30 p.m.**

Tallahassee Community College
Student Union Ballroom
Tallahassee, FL



Capital Circle Southwest Concepts Charrette, May 2007



CITY OF TALLAHASSEE · LEON COUNTY
BLUEPRINT
INTERGOVERNMENTAL AGENCY **2000**
& BEYOND

<http://www.blueprint2000.org/>
1311 Executive Center Drive, Suite 109
The Koger Center, Ellis Building
Tallahassee, FL 32301
Phone: 850-701-2740

 **Kimley-Horn
and Associates, Inc.**

CAPITAL CIRCLE SOUTHWEST CONNECTION

No. 5

July 2009

Mark your calendars!
**PREFERRED ALTERNATIVE
MEETING**
Thursday, August 13, 2009
5:30 p.m. to 7:30 p.m.

The Capital Circle Southwest Project Development and Environment (PD&E) Study is a community-based project. Over the past three years, citizens have participated in many meetings and open forums to discuss the needs, preferences, and concerns of the community. These meetings led to the development of many alternative segment concepts, which were analyzed and presented at the November 2008 Alternatives Meeting. The community reviewed the analyses completed for these segment alternatives and provided feedback to the project team, assisting in the development of a Widening Alternative along the existing alignment and a Realignment Alternative. Throughout this process the community has been an invaluable resource to the Blueprint 2000 project team. Blueprint 2000 remains committed to working closely with the community to find a viable and feasible solution that best addresses community needs and concerns. The Widening and Realignment Alternatives that the Intergovernmental Agency, made up of elected officials from the City and County, directed us to analyze further will be presented at the August 13th Preferred Alternative Meeting. These two alternatives and the associated results from all the detailed analyses will be available for public review. In addition, the project team will present the results for each alternative and will ask for input from the public into the evaluation of the analysis results. Following the meeting, the project team, considering the public's comments from the Alternatives Meeting, will present a recommended preferred alternative to the Intergovernmental Agency at their September meeting.

NOW IS THE TIME TO HELP SELECT THE PREFERRED BETWEEN THE WIDENING AND REALIGNMENT ALTERNATIVES!

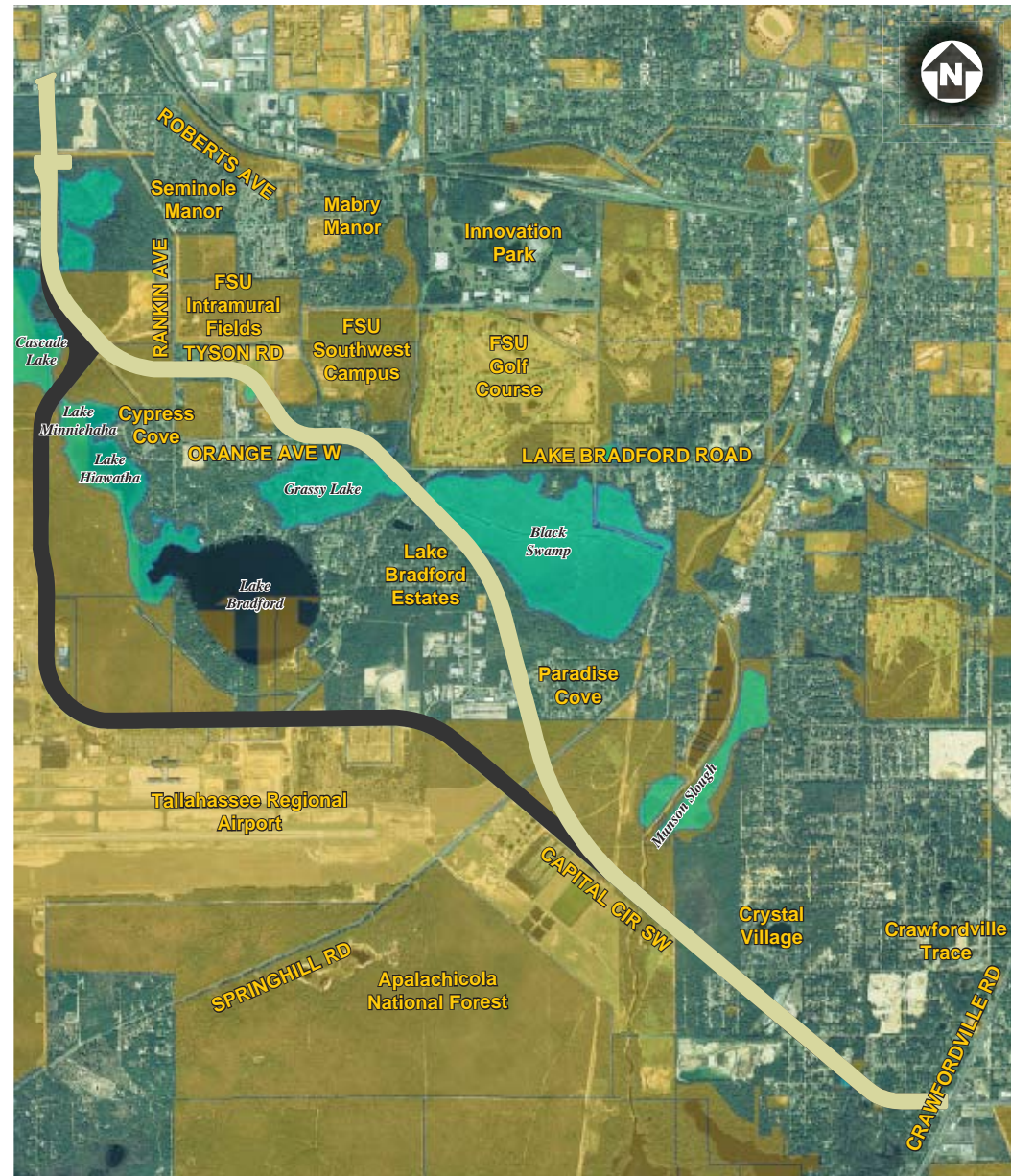
Please mark your calendars and plan to attend the Capital Circle Southwest Preferred Alternative Meeting on August 13th. This meeting is your opportunity to review the results of the analyses that the project team has conducted for the Widening Alternative and Realignment Alternative, and for you to provide feedback to the project team regarding the results and which should be the recommended preferred alternative.

If you have not been able to attend prior meetings, do not let that stop you from attending this Preferred Alternative Meeting. Your review of the materials and input into the process is valuable and appreciated.

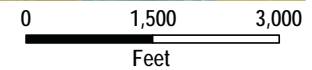
The meeting will begin with an open house type of forum allowing for a review of the maps and materials associated with each alternative, including the project team's application of the IA approved Evaluation Matrix. Following the open house, the project team will make a presentation giving a brief history of the project, an overview of how we arrived at the two alternatives, a presentation of the two alternatives, a summary of the analyses completed, and the results of the application of the Evaluation Matrix. Following the presentation, the project team will open the floor for questions and comments from the public. The public will also be given the opportunity to provide written comments during and after the meeting.





Following this Preferred Alternative Meeting, the project team will consider the results of the various analyses completed for the two alternatives using the IA approved Evaluation Matrix, together with public input received during and after the Preferred Alternative Meeting, and identify recommendations to be made at the September IA Meeting.

Project Information: The project team makes project information available as soon as it is finalized, both on the project website (www.blueprint2000.org/Project_W1/index.html) and at the Blueprint 2000 offices. Please take some time to review the project website and familiarize yourself with the project history and the analyses that have been completed. If you have difficulty accessing the website or need a copy of project materials, please contact Margie Quillman at 850-701-2740.



Alternatives Map



- | | |
|---|--|
|  Realignment Alternative |  Public Lands |
|  Widening Alternative |  Wetlands |